

NOAA FISHERIES

Better Data, **Better Fishing**

For-Hire Captains, Crew, and Clients Make It Happen

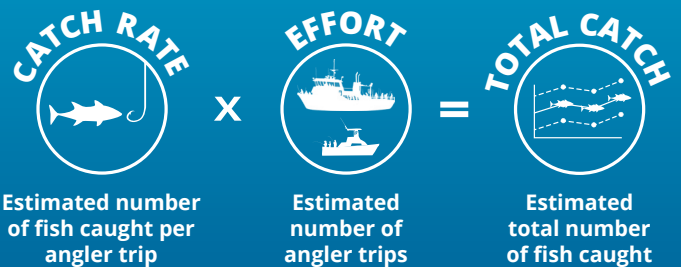
When you participate in recreational fishing surveys, you're making a vital contribution to the assessment and management of U.S. fish stocks. Information about what's being caught, kept, and released by recreational anglers is fundamental to the health of our fisheries and the future of recreational fishing.



Charter and Headboat Fishing Counts

Your catch and effort data help scientists assess the size and health of fish populations and the overall impact of the for-hire industry. Managers use this information to pass regulations that support the long-term sustainability of stocks—and for-hire fishing. Economic data allow managers to evaluate the effects of those regulations and assess disaster costs.

Estimating Total For-Hire Catch



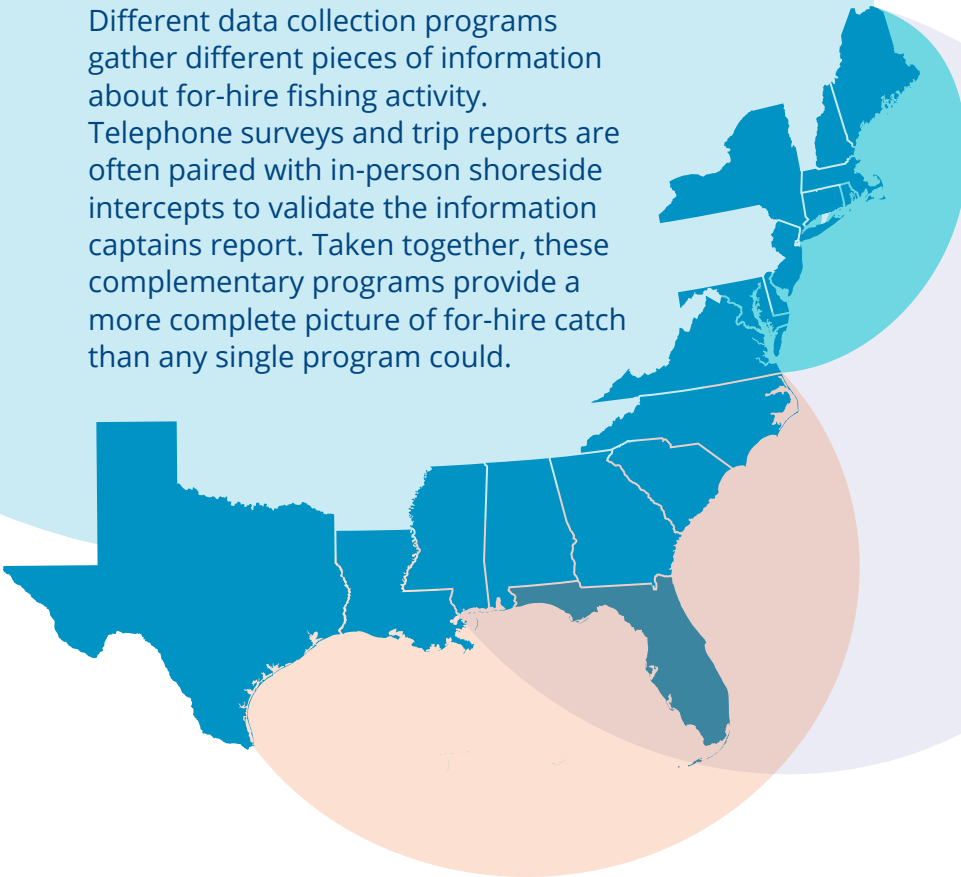
The conservation and management of U.S. fish stocks rely on accurate estimates of total recreational catch, which can only happen with the support and cooperation of for-hire captains, crew, and their clients.

Learn more about recreational fishing data collection at

countmyfish.noaa.gov

Atlantic and Gulf For-Hire Data Collection Programs

Different data collection programs gather different pieces of information about for-hire fishing activity. Telephone surveys and trip reports are often paired with in-person shoreside intercepts to validate the information captains report. Taken together, these complementary programs provide a more complete picture of for-hire catch than any single program could.



LARGE PELAGICS SURVEY*

Collects catch and effort data from private and charter boats targeting large pelagic species from **Maine to Virginia**.



ACCESS POINT ANGLER INTERCEPT SURVEY*

Collects catch data from shore, private boat, and for-hire anglers from **Maine to Mississippi**.



FOR-HIRE SURVEY*

Collects effort data from for-hire vessels from **Maine to Mississippi**.



SOUTHEAST REGION HEADBOAT SURVEY‡

Collects catch and effort data from federally permitted headboats from **North Carolina to Texas**.



GREATER ATLANTIC VESSEL TRIP REPORTS†

Collects catch and effort data from federally permitted for-hire vessels with **New England** and **Mid-Atlantic** permits, regardless of waters fished.



SOUTHEAST FOR-HIRE INTEGRATED ELECTRONIC REPORTING PROGRAM§

Collects catch, effort, and economic data from federally permitted for-hire vessels with **South Atlantic** and **Gulf of Mexico** permits, regardless of waters fished.



In-person survey



Phone survey



Electronic logbook

* Administered by NOAA Fisheries' Office of Science and Technology.

‡ Administered by Southeast Fisheries Science Center.

† Administered by Greater Atlantic Regional Fisheries Office.

§ Administered by Southeast Regional Office.