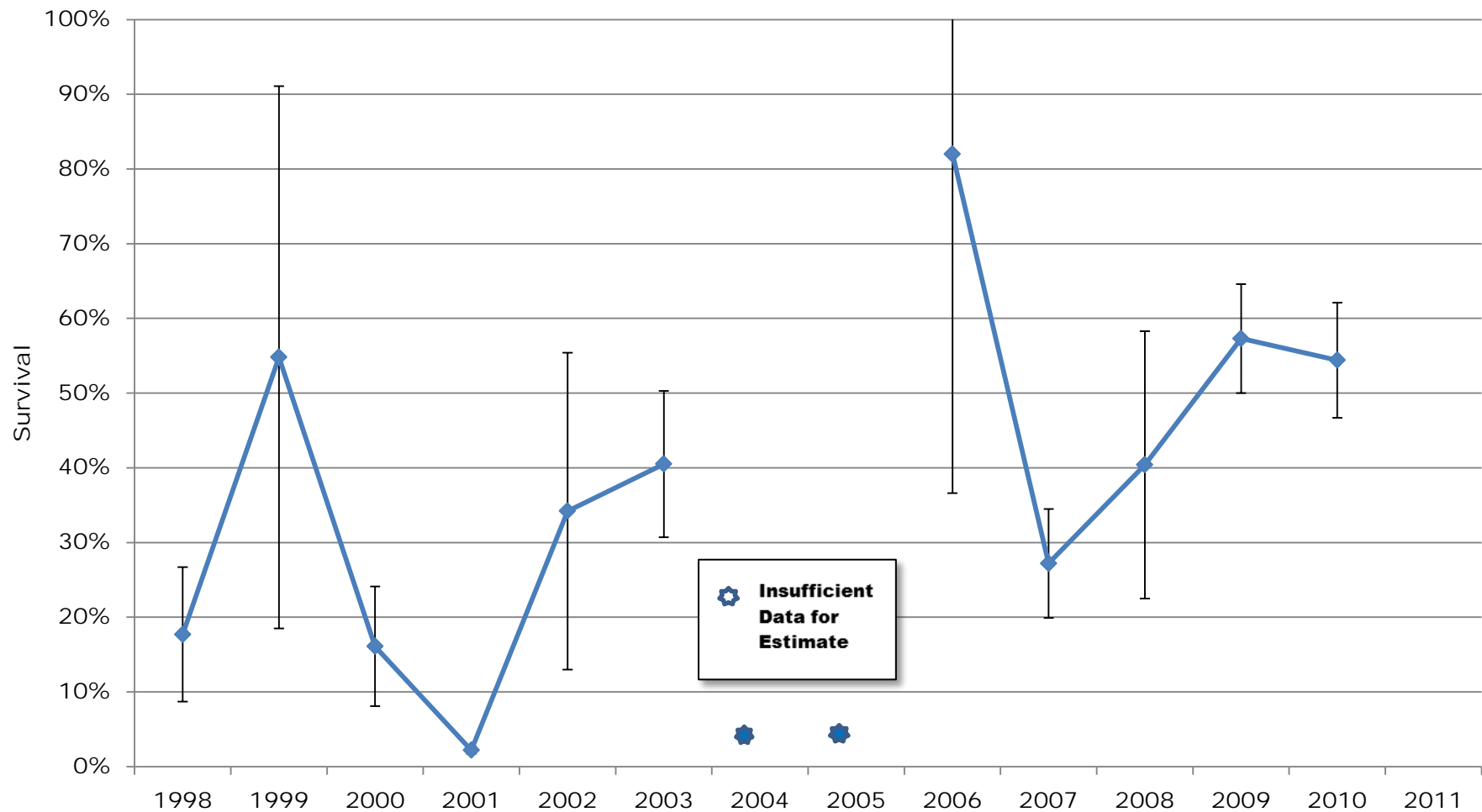




Snake River Sockeye juvenile downstream survival: Lower Granite Dam to Bonneville Dam

With standard error



1997-2011 Data: Faulkner et. al. 2012. Survival Estimates for the Passage of Spring-Migrating Juvenile Salmonids through Snake and Columbia River Dams and Reservoirs, 2011. Report of research for Bonneville Power Administration. February 2012.