

**NOAA FISHERIES**

# Electronic Vessel Trip Report (eVTR) Reporting Instructions



**NOAA FISHERIES**  
NATIONAL OCEANIC AND ATMOSPHERIC ADMINISTRATION

| **Greater Atlantic Region**



## Change Log

Table 1: Change Log

Date	Description
N/A	Added change log.
N/A	Added page numbers
N/A	Added definitions for 'fishing' and 'fishing trip' in <a href="#">Defining Fishing Trip Activity That Requires an eVTR</a> .
N/A	Added language seeking to clarify "reporting period" and "submission deadline" in <a href="#">Vessel Trip Reporting Requirements by Vessel Permit Type</a> .
N/A	Added Squid\Mackerel\Butterfish to listing of permits that are required to submit their eVTR's on a weekly basis in <a href="#">Vessel Trip Reporting Requirements by Vessel Permit Type</a> .
N/A	Changed 'Multiple Chart Area Trips' to 'Multiple Chart Area Fished Trips'*
1 Jan 2015	Modified 'Multiple Chart Area Fished Trips' to reflect that the chart area is now determined by haul back location.*
N/A	<a href="#"># of Crew</a> : Added text "If you intend to fish under a RSA\EFP for any portion of a trip you must check the RSA\EFP box."*
N/A	<a href="#"># of Crew</a> : Added "If you have an Observer onboard do not include them in the crew count."
1 Jan 2015	Removed codes LLO and CAR. Added codes OTT, DTC & DTS in <a href="#">Table 4: Trawl Gear Codes</a>
1 Jan 2015	<a href="#">Mesh/ Ring Size</a> — Add "mesh size" to the sentence "If more than one mesh/ring size was used in a haul (for example, multiple mesh sizes in a string of gillnets), enter the average per haul." So that it reads: "If more than one mesh/ring size was used in a haul (for example, multiple mesh sizes in a string of gillnets), enter the average mesh size per haul."
1 Jan 2015	<a href="#">Tow/Soak Time</a> — Removed "total estimated" from sentence "Enter the total estimated amount of time fishing (hours and minutes)." So that it now reads: "Enter the amount of time fishing (hours and minutes)."
1 Jan 2015	Fishing Effort Information by Gear Type Tables: Added "(Hours: Minutes)" to Tow\Soak Time for all gear.
1 Jan 2015	Species Codes Table: Removed codes SKATE, SKATEW, SKSMALL and SKLARGE. <a href="#">Table 29: Species Codes for Skates</a>
1 Jan 2015	Broke out single question regarding 'No Effort' trips into three separate questions*.
1 Jan 2015	Question 3 – We no longer require the reason for terminating a trip aside from writing 'No Effort' on the lower portion of the eVTR*.

## Electronic Vessel Trip Report (eVTR) Reporting Instructions

Date	Description
N/A	Added a separate question and answer for "Do I have to give my eVTR serial number to the dealer(s) that I sold my catch to?"#
17 Apr 2017	Added codes for Hermit and Lady crabs to <a href="#">Table 36: Species Codes for Shellfish</a> .
17 Apr 2017	Added codes in <a href="#">Table 29: Species Codes for Skates</a> for skates heads and racks. These codes apply to all skate species.
28 Jun 2017	Species added to Species Tables.
21 Sep 2017	Forage species added to Species Tables.
21 Sep 2017	Added TTS gear code to <a href="#">Table 4: Trawl Gear Codes</a>
23 Feb 2018	Added 'Recreational' to <a href="#"># of Anglers</a> and <a href="#"># of Crew</a> guidance
23 Feb 2018	<a href="#">Table 19: Fishing Effort Information by Gear Type = Rod &amp; Reel / Handline</a> , changed "Number of hooks per line" to "Average number of hooks per line"
12 Mar 2018	Row added to <a href="#">Vessel Trip Reporting Requirements by Vessel Permit Type</a> describing the new Party & Charter reporting requirements.
4 May 2018	Added 21 additional species to the Species Codes Tables at the request of Matt Seeley with the MAFMC.
4 May 2018	<a href="#">Offloading Port or Landing Port</a> – Removed redundant text
4 May 2018	<a href="#">Discarded</a> – Added note instructing that when reporting lobster discards only those lobsters that are dead should be annotated under discards.
4 Nov 2019	Amended hyperlink and text in the cover page.
4 Nov 2019	Turtles category amended to Sea Turtles in <a href="#">Table 38: Species Codes for Sea Turtles</a> .
4 Nov 2019	Added 2 RAY species under Other category in <a href="#">Table 35: Species Codes for Other</a>
12 Nov 2019	Added Jonah Crab Claws to <a href="#">Table 36: Species Codes for Shellfish</a>
21 Nov 2019	Reformatted table, added OBP Gear Code to <a href="#">Table 4: Trawl Gear Codes</a> .
21 Nov 2019	Split out Longfin Squid and Butterfish Permit Types in <a href="#">Table 2: eVTR Requirements by Vessel Permit Type</a> .
10 Dec 2019	Amended date in cover page
10 Dec 2019	Added Fish Online option for ordering eVTRs#
07 Jan 2020	Converted document format
21 Jan 2020	Fixed in-text references to range of Gear Types Tables

## Electronic Vessel Trip Report (eVTR) Reporting Instructions

Date	Description
16 Jul 2020	Fixed Dredge gear code DSC to be DREDGE, SCALLOP, STANDARD W/CHAIN MAT in <a href="#">Table 5: Dredge Gear Codes</a> .
25 Aug 2021	Changed "Herring Carrier Vessel" to "Carrier Vessel" in <a href="#">No eVTR Required</a> .
25 Aug 2021	Changed "WHELK, CANNELED" to "WHELK, CHanneLED" in <a href="#">Table 36: Species Codes for Shellfish</a> .
20 Dec 2021	Revised content of entire guide to reflect electronic-reporting-only content.
08 April 2022	Updated instructions for Gear Size in <a href="#">Table 11: Fishing Effort Information by Gear Type = Trawl</a> and <a href="#">Table 12: Fishing Effort Information by Gear Type = Dredge</a> .
30 Sept 2023	Update for ITQ clam and lobster info in tables, resulting in the renumbering of Tables 15-38.

## Contents

Overview .....	8
Vessel Trip Reporting Requirements by Vessel Permit Type .....	8
Defining Fishing Trip Activity That Requires an eVTR .....	8
Reporting Under Specific Circumstances .....	9
No Fish Caught or No Fish Onboard .....	9
No eVTR Required .....	9
When to Complete and Submit More Than One eVTR Effort .....	9
How to Report When You Fish in More than One Chart Area .....	10
Protected Species.....	10
Privacy Act Statement.....	11
Filling Out a Standard eVTR (Including Maine Mahogany).....	12
eVTR Fields.....	12
Vessel Name, USCG Documentation or State Registration, Vessel Permit Number .....	12
Date and Time Sailed .....	12
Date and Time Landed .....	12
Trip Type.....	13
# of Crew .....	13
# of Anglers .....	13
Gear Code.....	13
Mesh/ Ring Size .....	16
Gear Quantity .....	17
Gear Size.....	17
Fishing Depth .....	17
Number of Hauls .....	17
Chart Area .....	17
Latitude .....	18
Longitude .....	18
Tow/Soak Time.....	19
Species Code .....	24
Kept .....	24
Discarded.....	24
Dealer Information.....	25
Date Sold .....	25
Offloading Port or Landing Port .....	25
Species Codes by Category .....	26
Filling Out a Surf Clam / Ocean Quahog eVTR .....	37
Vessel Name, USCG Documentation or State Registration, NMFS Vessel Permit Number .....	37
Date Landed .....	37
Trip Type.....	37
# of Crew .....	37

Latitude ..... 38

Longitude ..... 38

Time at Sea ..... 38

Time Fished ..... 38

Species Codes ..... 38

Kept ..... 38

Discarded..... 38

Dealer Information..... 38

Offloading Port ..... 38

Price per Bushel ..... 38

Allocation Number ..... 39

Tag Numbers ..... 39

Frequently Asked Questions (FAQs) ..... 39

Chart Areas..... 40

List of Figures

Figure 1: Gulf of Maine Chart Areas ..... 41

Figure 2: Georges Bank Chart Areas ..... 42

Figure 3: Southern New England Chart Areas ..... 43

Figure 4: Mid-Atlantic Chart Areas ..... 44

Figure 5: Massachusetts Bay and Cape Cod Bay Chart Areas..... 45

Figure 6: Rhode Island Sound Cape Cod and Islands Chart Areas ..... 46

Figure 7: Long Island Sound and New York Chart Areas..... 47

Figure 8: Cape Hatteras and U. S. Southern Atlantic Chart Areas ..... 48

## List of Tables

Table 1: Change Log .....	1
Table 2: eVTR Requirements by Vessel Permit Type .....	8
Table 3: Converting 12-Hour Time to 24-Hour Time .....	13
Table 4: Trawl Gear Codes .....	14
Table 5: Dredge Gear Codes .....	15
Table 6: Pot and Trap Gear Codes .....	15
Table 7: Gillnet Gear Codes .....	16
Table 8: Hook and Line Gear Codes .....	16
Table 9: Other Gear Codes.....	16
Table 10: Position to Report by Gear Type .....	18
Table 11: Fishing Effort Information by Gear Type = Trawl.....	19
Table 12: Fishing Effort Information by Gear Type = Dredge .....	19
Table 13: ITQ Clam Specific Fishing Effort Information by Gear Type = Dredge .....	20
Table 14: Fishing Effort Information by Gear Type = Gillnet .....	20
Table 15: Fishing Effort Information by Gear Type = Pots (excluding Lobster and Jonah Crab pots) .....	20
Table 16: Fishing Effort Information by Gear Type = Pots (for Lobster / Jonah Crab) .....	21
Table 17: Fishing Effort Information by Gear Type = Pots (for Lobster / Jonah Crab) .....	21
Table 18: Fishing Effort Information by Gear Type = Seines .....	21
Table 19: Fishing Effort Information by Gear Type = Rod & Reel / Handline .....	22
Table 20: Fishing Effort Information by Gear Type = Diving.....	22
Table 21: Fishing Effort Information by Gear Type = Longline .....	22
Table 22: Fishing Effort Information by Gear Type = Harpoon.....	22
Table 23: Fishing Effort Information by Gear Type = Cast Net .....	23
Table 24: Fishing Effort Information by Gear Type = Traps.....	23
Table 25: Fishing Effort Information by Gear Type = Hand Rake .....	23
Table 26: Dealer Codes .....	25
Table 27: Species Codes for Groundfish .....	26
Table 28: Species Codes for Flounders .....	26
Table 29: Species Codes for Skates.....	27
Table 30: Species Codes for Pelagics .....	28
Table 31: Species Codes for Other Finfish (Northern).....	29
Table 32: Species Codes for Other Finfish (Southern).....	31
Table 33: Species Codes for Tuna .....	33
Table 34: Species Codes for Sharks.....	33
Table 35: Species Codes for Other .....	34
Table 36: Species Codes for Shellfish.....	35
Table 37: Species Codes for Invertebrates .....	36
Table 38: Species Codes for Sea Turtles .....	37



## Overview

This guide provides the information that you need to satisfy the reporting requirements for fishing in the Greater Atlantic Region under a Federal permit.

**NOTE:** For general questions about Vessel Trip Reporting, please call (978) 281-9246. For reporting assistance, call (978) 281-9188 or email [nmfs.gar.reporting@noaa.gov](mailto:nmfs.gar.reporting@noaa.gov).

## Vessel Trip Reporting Requirements by Vessel Permit Type

[Table 2](#) provides information about the reporting requirements for each type of fishing permit in the Greater Atlantic Region.

**Table 2: eVTR Requirements by Vessel Permit Type**

Permit Type	Required Frequency of Reporting
Trips fishing under a Commercial permit, including Commercial lobster and Commercial Clam ITQ permits	eVTRs must have all effort and catch information completed before offloading.
Trips fishing under a Party or Charter permit	eVTRs must be submitted within 48 hours of entering port.
Trips fishing under a Private recreational Tilefish permit	eVTRs must be submitted within 24 hours after entering port at the conclusion of a trip.
Private Recreational Trips (separate from private recreational Tilefish trips)	eVTRs for private recreational fishing trips must be submitted within 48 hours of entering port.

## Defining Fishing Trip Activity That Requires an eVTR

If your vessel is issued any of the fishery permits with reporting requirements shown in [Table 2](#), you are required to complete an eVTR for every fishing trip, whether the vessel is fishing in state or federal waters, or in another region of the country, such as the Gulf of Mexico. This is true for all trips, no matter what species is being fished for or caught; preparing to catch or harvest fish, or attempting to catch or harvest fish, must be reported even if no landings are made. Having an observer or at-sea monitor on board during a trip **does not** relieve you from this requirement.

---

**NOTE:** The trip is the period of time during which these activities are conducted, beginning when the vessel leaves port and ending when the vessel returns to port.

---

## Reporting Under Specific Circumstances

Read this section to understand how specific circumstances can affect eVTR reporting.

### *No Fish Caught or No Fish Onboard*

You are required to report fishing trips even if no fish are caught or onboard if the following events occur:

- If you begin a fishing trip, but must return to port before setting or retrieving gear because of issues like bad weather or a mechanical problem, you must complete an eVTR. Provide Sail and Land information, trip category, number of crew (and anglers if necessary) and provide your reason for returning to port.
- If you make a fishing trip to set gear, you must complete an eVTR. Provide Sail and Land information, trip category, number of crew and indicate this was a Set Gear trip.
- If you make a fishing trip and do not catch any fish, you must complete an eVTR. Provide all trip and effort information, then enter **No Catch** or **NC** into the Species Code field.

### *No eVTR Required*

There are several instances where an eVTR isn't required for a trip:

- If you are transiting without any product onboard and don't engage in any fishing activity.
- For example, you're moving your vessel to a shipyard or you're returning to your home port.
- If you are operating under a scientific Letter of Acknowledgement (LOA)
- If you are operating as a Carrier Vessel.

### *When to Complete and Submit More Than One eVTR Effort*

You must complete a new effort each time you change the fishing area, gear, or mesh / ring. This means a new effort is required each time you do the following:

- Change the chart area (inshore or offshore) in which you are fishing.
- Change the type of gear you are using.
- Change the mesh size or ring size in the gear you are using.

### ***How to Report When You Fish in More than One Chart Area***

If your fishing activity occurs in more than one chart area, you must submit a new eVTR effort for each chart area where you started to haul back or retrieve gear. If your tow or the placement of your fixed gear (for example, gillnets) crosses chart area boundaries, the area you report must be the area you were in when you started to retrieve or haul back your gear.

For the gear types shown in the Gear Code tables in this document (Table 4: Trawl Gear Codes, Table 5: Dredge Gear Codes, Table 6: Pot and Trap Gear Codes, Table 7: Gillnet Gear Codes, Table 8: Hook and Line Gear Codes, and Table 9: Other Gear Codes), this means the following:

- For mobile gear (trawl gears and dredges), you report the area where the haulback occurs.
- For fixed gear (gillnets, longline, pots, traps, and weirs) you report the area where the hauling equipment is put into gear or retrieval of one end of the set begins.
- For purse seine gear, and other seine gears, you report the area where the skiff hits the water upon setting the gear, or when the first piece of gear hits the water, whichever occurs first.
- For handline, rod and reel, and the gears listed as Other Gear Codes ([Table 9](#)), you report the area where the gear is completely retrieved and aboard the vessel.

For example, if you start a tow in chart area **522**, start hauling back in area **525**, and land 100 pounds of monkfish, then all the catch from this tow would be reported in chart area **525**.

### **Protected Species**

You must report all species caught (both kept and discarded), including protected species. To report sea turtles or ESA-listed fish species (for example, Atlantic salmon, sturgeon, giant manta rays, oceanic whitetip sharks) incidentally caught, injured, or killed, enter the species code for each turtle or fish in the **Species Code** field of the eVTR. Tables of ESA-listed species in the Northeast and Mid-Atlantic can be found at the [Endangered and Threatened Species in the New England/Mid-Atlantic Region](#) web site. Enter the actual number (count) of sea turtles or listed fish caught in the **Discards** field.

When an incidental mortality or injury of a marine mammal (seals, dolphins, porpoises, and whales) occurs during commercial fishing activities, you must fill out and return the Marine Mammal Authorization Program Mortality & Injury Reporting Form within 48 hours of returning from the trip on which the incident occurred. You may obtain additional information, including a reporting form, by visiting the [Marine Mammal Authorization Program web site](#) or by calling (978) 281-9328.

The National Marine Fisheries Service requires vessel trip information for the conservation and management of marine fishery resources in accordance with the Magnuson-Stevens Fishery Conservation and Management Act.

The data reported will be used to develop, implement, and monitor fishery management strategies and for a variety of other uses. Submission is mandatory for those persons falling under the requirements of 50 CFR 648.7 (b). All data submitted will be handled as confidential material in accordance with NOAA Administrative Orders. Public reporting burden for the survey is estimated to average 5 minutes per response, including the time for reviewing instructions, searching existing data sources, gathering and maintaining the data needed, and completing and reviewing the collection of information. Send comments regarding this burden estimate or any other aspect of this collection of

information, including suggestions for reducing this burden, to NOAA Fisheries, 55 Great Republic Drive, Gloucester, MA 01930.

Notwithstanding any other provision of the law, no person is required to respond to, nor shall any person be subject to a penalty for failure to comply with, a collection of information subject to the requirements of the Paperwork Reduction Act, unless that collection of information displays a currently valid OMB Control Number. This information can be found on the web page [Electronic Vessel Trip Reporting Software Options](#).

## Privacy Act Statement

**Authority:** The collection of this information is authorized under the Magnuson-Stevens Fishery Conservation and Management Act, 16 U.S.C 1801 et seq.

**Purpose:** The Magnuson-Stevens Act requires that conservation and management measures must prevent over fishing while achieving, on a continuing basis, the optimum yield from each fishery. Vessel logbooks are essential tools in the management of fishery resources. Section 303(a)(5) of the Magnuson-Stevens Act specifically identifies the kinds of data to be collected for fishery management plans (FMPs).

**Routine Uses:** The Department will use this information for effective fishery management. Disclosure of this information is permitted under the Privacy Act of 1974 (5 U.S.C. Section 552a), to be shared within NMFS offices, in order to coordinate monitoring and management of sustainability of fisheries and protected resources, as well as with the applicable State or Regional Marine Fisheries Commissions and International Organizations.

Disclosure of this information is also subject to all of the published routine uses as identified in the COMMERCE/NOAA-6, Fishermen's Statistical Data.

**Disclosure:** Submission is mandatory for those persons falling under the requirements of 50 CFR 648.7 (b). If the information is not provided, permit status may be affected.

## Filling Out a Standard eVTR (Including Maine Mahogany)

Each eVTR software application works differently but generally collects the same trip information. For detailed instructions on submitting eVTRs through GARFO's Fish Online eVTR applications, refer to the following appropriate web pages on the GARFO web site:

- [How to Complete a For-hire eVTR Using Fish Online eVTR App for iOS](#)
- [How to Complete a Commercial eVTR Using Fish Online eVTR App for iOS](#)
- [How to Complete a Private Recreational eVTR Using Fish Online eVTR App for iOS](#)
- [How to Complete a Commercial eVTR Using Fish Online eVTR Web App](#)
- [How to Complete a Commercial eVTR for IFQ Clams Using Fish Online eVTR Web App](#)
- [How to Complete a Commercial eVTR for Lobster & Jonah Crab Using Fish Online eVTR Web App](#)
- [How to Complete a For-hire eVTR Using Fish Online eVTR Web App](#)
- [How to Complete a Private Recreational eVTR Using Fish Online eVTR Web App](#)

For an overview of the eVTR app and software options available to you for Vessel Trip Reporting, refer to the following web page:

- [Electronic Vessel Trip Reporting Software Options](#)

## eVTR Fields

Different eVTR apps collect the same core information, but apps do not function identically. Apps may collect required information; however, field names can differ.

---

**NOTE:** Be sure to reference the section [Filling Out a Surf Clam / Ocean Quahog eVTR](#) for fields pertaining to ITQ clam trips.

---

This section provides the core fields that are collected by eVTR applications and also provides a definition for each of these fields.

---

**NOTE:** You must correctly complete all fields on the eVTR or else the system will not accept the eVTR; you must correct any mistakes before you can successfully submit the eVTR.

---

## Vessel Name, USCG Documentation or State Registration, Vessel Permit Number

If required by your eVTR application, enter your vessel name or NMFS Vessel Permit Number.

## Date and Time Sailed

Enter the month, day, year and time you sailed as requested by your eVTR application. If your eVTR application requests 24-hour (military) time, refer to [Table 3](#).

## Date and Time Landed

Enter the month, day, year and time you arrived in port. If your eVTR application requests 24-hour (military) time, refer to [Table 3](#).

**Table 3: Converting 12-Hour Time to 24-Hour Time**

Midnight to Noon Conversion	Noon to Midnight Conversions
12:00 AM = 00:00 (Midnight)	12:00 PM = 12:00 (Noon)
1:00 AM = 01:00	1:00 PM = 13:00
2:00 AM = 02:00	2:00 PM = 14:00
3:00 AM = 03:00	3:00 PM = 15:00
4:00 AM = 04:00	4:00 PM = 16:00
5:00 AM = 05:00	5:00 PM = 17:00
6:00 AM = 06:00	6:00 PM = 18:00
7:00 AM = 07:00	7:00 PM = 19:00
8:00 AM = 08:00	8:00 PM = 20:00
9:00 AM = 09:00	9:00 PM = 21:00
10:00 AM = 10:00	10:00 PM = 22:00
11:00 AM = 11:00	11:00 PM = 23:00

## Trip Type

Enter trip type as Commercial, Commercial - Lobster, Commercial - Clam ITQ, Party, Charter, Charter - Lobster, Private Recreational (or Headboat, depending on the eVTR application used).

## # of Crew

Enter the total number of crew members including the captain. If you have an Observer on board do not include them in the crew count. Party or Charter vessels should include all crew members or employees on board for the trip.

## # of Anglers

For party, charter, lobster charter, or recreational trips only: enter the total number of anglers, excluding the vessel's crew.

## Gear Code

For the fishing gear you used, select the appropriate gear code in your eVTR application. If the appropriate gear code is not provided in your eVTR application, please contact your eVTR vendor. For reference, the following gear codes in [Table 4](#), [Table 5](#), [Table 6](#), [Table 7](#), [Table 8](#), and [Table 9](#) are used by GARFO's Fish Online eVTR applications.

**NOTE:** With the publishing the Lobster Rule, be aware that Lobster or Crab pot gear codes will only be available when selecting Commercial-Lobster Trip. The other Pot and Trap Gear Codes will still be available for Commercial Trips.

Table 4: Trawl Gear Codes

Gear Code	Gear Description
OBP	OTTER TRAWL, LARGE MESH BELLY PANEL
OHS	OTTER TRAWL, HADDOCK SEPARATOR
OTB	OTTER TRAWL, BEAM
OTC	OTTER TRAWL, BOTTOM, SCALLOP
OTF	OTTER TRAWL, BOTTOM, FISH
OTM	OTTER TRAWL, MIDWATER
OTO	OTTER TRAWL, BOTTOM, OTHER
OTR	OTTER TRAWL, RUHLE
OTS	OTTER TRAWL, BOTTOM, SHRIMP
OTT	OTTER TRAWL, BOTTOM, FISH, JOINED (TWIN TRAWL)
TTS	OTTER TRAWL, BOTTOM, SHRIMP, JOINED (TWIN TRAWL)
PTM	PAIR TRAWL, MIDWATER
PTB	PAIR TRAWL, BOTTOM
PUR	SEINE, PURSE
SED	SEINE, DANISH
SEH	SEINE, HAUL
SES	SEINE, SCOTTISH
STS	SEINE, STOP

**Table 5: Dredge Gear Codes**

<b>Gear Code</b>	<b>Gear Description</b>
DRC	DREDGE, OCEAN QUAHOG/SURF CLAM
DRM	DREDGE, MUSSEL
DRO	DREDGE, OTHER
DRS	DREDGE, SCALLOP, STANDARD
DSC	DREDGE, SCALLOP, STANDARD W/CHAIN MAT
DTS	DREDGE, SCALLOP, TURTLE DEFLECTOR
DTC	DREDGE, SCALLOP, TURTLE DEFLECTOR W/CHAIN MAT
DRU	DREDGE, URCHIN

**Table 6: Pot and Trap Gear Codes**

<b>Gear Code</b>	<b>Gear Description</b>
PTC	POT, CRAB
PTE	POT, EEL
PTF	POT, FISH
PTH	POT, HAG
PTL	POT, LOBSTER
PTO	POT, OTHER
PTS	POT, SHRIMP
PTW	POT, CONCH/WHELK
PTX	POTS, MIXED
TRP	TRAP
WEI	WEIR



**Table 7: Gillnet Gear Codes**

<b>Gear Code</b>	<b>Gear Description</b>
GND	GILL NET, DRIFT, LARGE MESH
GNO	GILL NET, OTHER
GNR	GILL NET, RUNAROUND
GNS	GILL NET, SINK
GNT	GILL NET, DRIFT, SMALL MESH

**Table 8: Hook and Line Gear Codes**

<b>Gear Code</b>	<b>Gear Description</b>
LLB	LOGLINE, BOTTOM
LLP	LOGLINE, PELAGIC
HND	HAND LINE/ROD & REEL

**Table 9: Other Gear Codes**

<b>Gear Code</b>	<b>Gear Description</b>
CST	CAST
DIV	DIVING GEAR
FYK	FYKE NET
HRP	HARPOON
MIX	MIXED GEAR
RAK	HAND RAKE
OTH	OTHER GEAR

## Mesh/ Ring Size

Enter mesh/ring size of the gear being fished. Use the definitions in the Fishing Effort Information by Gear Type tables ([Table 11](#) through [Table 25](#) in this document). If more than one mesh/ring size was used in a haul (for example, multiple mesh sizes in a string of gillnets), enter the average mesh size per haul.

---

**NOTE:** You must complete a new Effort each time you change mesh/ring sizes during a trip.

---

## Gear Quantity

Enter the quantity of gear being fished per haul. Use the definitions in the Fishing Effort Information by Gear Type tables (Table 11 through Table 23 in this document). If more than one of this gear type was used during the trip, enter the average quantity of gear per haul.

## Gear Size

Enter the size of gear being fished using the definitions in the Fishing Effort Information by Gear Type tables (Table 11 through Table 23 in this document).

## Fishing Depth

Enter the average depth as requested by your eVTR application.

## Number of Hauls

Enter the total number of tows, sets, or strings you hauled as appropriate for your gear using the Fishing Effort Information by the Gear Type tables (Table 11 through Table 23 in this document).

## Chart Area

If required by your eVTR application, enter the three-digit chart area fished. If you're not sure of the appropriate chart area, charts are supplied in [Figure 1](#), [Figure 2](#), [Figure 3](#), [Figure 4](#), [Figure 5](#), Figure 6, [Figure 7](#), and [Figure 8](#) at the back of this document.

Area fished may be an offshore area (indicated by bold font in the charts) or an inshore area (indicated by small font in the charts). For each area (inshore or offshore) where the start of haul back occurred during a trip, a separate eVTR effort for each area must be completed using the three-digit code from the appropriate chart.

For instance, if nine of your tows ended in one area you would report this area on your eVTR. If on the tenth tow you crossed into a new area and started hauling back in that area, you would complete a separate Effort for that tow; any change in gear type, mesh/ring size or chart area requires documenting a separate effort for that trip.

- If you're fishing north of 35 degrees latitude and east of the demarcated area boundaries, enter **899**.
- If you're south of 35 degrees latitude and east of the demarcated area boundaries, enter **799**.
- If you are fishing in the Gulf of Mexico, enter **798**.
- If fishing in the areas found on the inshore charts for MA, RI, CT, and NY state waters ([Figure 3](#), Figure 4, Figure 5), use the inshore code (small font) when appropriate. For example, if you're fishing just off of the tip of Cape Ann ([Figure 3](#)) you would report area **116**. Likewise, if you are fishing just off of New Haven in Long Island Sound ([Figure 5](#)) you would report area **143**.
- Catch should be reported based upon the chart area (and corresponding eVTR) *where the start of your haul back occurred*.
  - For mobile gear (trawls and dredges), this is when the hauling equipment is put into gear with the intention of hauling back and retrieval of net/dredge begins.

- For fixed gear (gillnets, longline, pots, traps, and weirs), this is when the hauling equipment is put into gear or retrieval of one end of the set begins.
- For purse seine gear, and other seines, this is when the skiff hits the water upon setting the gear, or the first piece of gear hits the water, whichever occurs first.
- For all other gears (handline, rod and reel, and the gears listed in [Table 9](#) as **Other**), you report the area where the gear is *completely* retrieved and aboard the vessel.

## Latitude

If required by your eVTR application, enter the latitude where the majority of your haul-backs or fishing efforts occurred.

## Longitude

If required by your eVTR application, enter the longitude where the majority of your haul-backs or fishing efforts occurred. The Position to Report by Gear Type Table (Table 10) defines, by gear type, the position to report for the "majority of fishing effort".

**Table 10: Position to Report by Gear Type**

<b>Gear Type</b>	<b>Reporting Position</b>
Trawl	Location of the start of haul back for the longest tow
Dredge	Location of the start of haul back for the longest tow
Gillnet	Location of the start of haul back for the string with the most panels
Pots	Location of the start of haul back for the string with the most pots
Seines	Location of the start of haul back for the longest soak
Rod & Reel / Hand Line	Location of the majority of casts (or if drifting, where the first cast of the drift occurred)
Diving	Location where the last dive ended
Longline	Location of the start of haul back for the longest line
Harpoon	Location of the majority of casts (or if drifting, where the first cast of the drift occurred)
Cast Net	Location of the majority of casts (or if drifting, where the first cast of the drift occurred)
Traps	Location of the start of haul back for the string with the most traps
Hand Rake	Location where the majority of raking occurred

## Tow/Soak Time

- Enter the Tow/Soak Time based on the gear used.
  - For Mobile Gear (trawl, dredges, etc.), enter the **average** amount of time per tow which is defined as the time the gear is completely hooked up to when the gear is completely hauled back.
  - For Fixed Gear (gill nets, long lines, pots, etc.), enter the **average** time that the gear soaked which is defined as starting when the first piece of gear is deployed and ending when the last piece of gear is hauled back.
  - For Seines, enter the **average** soak time per haul
  - For Rod & Reel / Hand Line, enter the **total** amount of time the lines were actually fishing.
  - For Harpoon, enter the **total** amount of time spent searching for targeted species.
  - For Diving, enter the dive time.

The Fishing Effort Information by Gear Type tables [Table 11](#) through [Table 25](#) immediately following summarize how mesh/ring size, gear quantity, gear size, number of hauls and tow/soak time should be entered for different gear types.

---

**NOTE:** Some apps may collect gear quantity even if GARFO does not require it.

---

**Table 11: Fishing Effort Information by Gear Type = Trawl**

Reporting Field	Description
Mesh/Ring Size	Smallest mesh size used in Cod end or liner
Gear Quantity	Number of individual trawls being towed at one time
Gear Size	Sweep (foot rope) length in feet. If two different nets were used, report the larger sweep length.
Number of Hauls	Number of tows hauled per trip
Tow/Soak Time	Average tow time per haul (hours : minutes)

**Table 12: Fishing Effort Information by Gear Type = Dredge**

Reporting Field	Description
Mesh/Ring Size	Ring size
Gear Quantity	Number of individual dredges being towed at one time
Gear Size	Dredge width in inches. If two different nets were used, report the average dredge width.
Number of Hauls	Number of tows hauled per trip
Tow/Soak Time	Average tow time per haul (hours : minutes)

**Table 13: ITQ Clam Specific Fishing Effort Information by Gear Type = Dredge**

Reporting Field	Description
Price per bushel	Enter the price per bushel
Allocation Number	Enter the allocation number. If more than one allocation number is being used, there will be multiple offloads. Enter the number of bushels for that first allocation number only and complete the offload. Then enter the remaining number of bushels for the second Allocation Number.
Tag number/ tag range	Enter the tag numbers or tag range. If there is more than one Allocation Number Only enter tag numbers or tag ranges for that particular Allocation Number.

**Table 14: Fishing Effort Information by Gear Type = Gillnet**

Reporting Field	Description
Mesh/Ring Size	Mesh size
Gear Quantity	Average number of nets per string
Gear Size	Average length of the nets used in a string (not the entire string)
Number of Hauls	Total number of strings hauled per trip (For example, a string 3000 feet in total length would typically consist of 10 nets (Gear Quantity) with an average length of 300 feet [Gear Size]).
Tow/Soak Time	Average soak time per haul (hours : minutes)

**Table 15: Fishing Effort Information by Gear Type = Pots (excluding Lobster and Jonah Crab pots)**

Reporting Field	Description
Mesh/Ring Size	Entrance (ring, hoop) size
Gear Quantity	Average number of pots per string
Gear Size	Total number of pots in the water
Number of Hauls	Total number of strings hauled per trip
Tow/Soak Time	Average soak time per haul (hours : minutes)

**Table 16: Fishing Effort Information by Gear Type = Pots (for Lobster / Jonah Crab)**

Reporting Field	Description
Total Number of Pots in This Area	Total number of pots in the reported chart area
Number of Pots Hauled This Area	Number of pots hauled in the reported charts area
Total Number of Buoy Lines in This Area	Total number of buoy lines in the reported chart area
Average Number of Pots Per String Hauled This Area	Average number of pots per string hauled in the reported chart area

**Table 17: Fishing Effort Information by Gear Type = Pots (for Lobster / Jonah Crab)**

Reporting Field	Description
Total Number of Pots in the Water	Total number of pots in the water in all areas
Average Number of Pots Per String in Water	Average number of pots per string in all areas
Total Number of Buoy Lines in water	Total number of buoy lines in the water in all areas
Number of Strings Hauled This Trip	Average number of strings that were hauled on this trip
Average Soak time of Strings Hauled This Trip	Average soak time of all the strings hauled on this trip

For the text of the lobster rule in the Federal Register, see [Fisheries of the Northeastern United States; Atlantic Coastal Fisheries Cooperative Management Act Provisions; American Lobster Fishery](#)

**Table 18: Fishing Effort Information by Gear Type = Seines**

Reporting Field	Description
Mesh/Ring Size	Mesh size
Gear Quantity	Number of nets
Gear Size	Length of head rope in feet
Number of Hauls	Number of seines hauled per trip
Tow/Soak Time	Average soak time per haul (hours : minutes)

**Table 19: Fishing Effort Information by Gear Type = Rod & Reel / Handline**

Reporting Field	Description
Mesh/Ring Size	<Leave Blank>
Gear Quantity	Average number of hooks per line
Gear Size	<Leave Blank>
Number of Hauls	<Leave Blank>
Tow/Soak Time	Enter total amount of time the lines were fishing

**Table 20: Fishing Effort Information by Gear Type = Diving**

Reporting Field	Description
Mesh/Ring Size	<Leave Blank>
Gear Quantity	<Leave Blank>
Gear Size	<Leave Blank>
Number of Hauls	<Leave Blank>
Tow/Soak Time	Dive time (hours : minutes)

**Table 21: Fishing Effort Information by Gear Type = Longline**

Reporting Field	Description
Mesh/Ring Size	<Leave Blank>
Gear Quantity	Average number of hooks per line
Gear Size	Average main line length to the nearest tenth of a nautical mile (for example, 1.5)
Number of Hauls	Number of sets hauled
Tow/Soak Time	Average soak time per set (hours : minutes)

**Table 22: Fishing Effort Information by Gear Type = Harpoon**

Reporting Field	Description
Mesh/Ring Size	<Leave Blank>
Gear Quantity	Number of harpoons
Gear Size	<Leave Blank>

Reporting Field	Description
Number of Hauls	Number of throws
Tow/Soak Time	Total amount of time spent searching for targeted species (hours : minutes)

**Table 23: Fishing Effort Information by Gear Type = Cast Net**

Reporting Field	Description
Mesh/Ring Size	Mesh size
Gear Quantity	<Leave Blank>
Gear Size	Average radius of net(s)
Number of Hauls	Number of hauls
Tow/Soak Time	Total amount of time spent searching for targeted species (hours : minutes)

**Table 24: Fishing Effort Information by Gear Type = Traps**

Reporting Field	Description
Mesh/Ring Size	Mesh size of crib
Gear Quantity	Number of traps
Gear Size	Length of leader (feet)
Number of Hauls	number of sets lifted
Tow/Soak Time	Average soak time per haul (hours : minutes)

**Table 25: Fishing Effort Information by Gear Type = Hand Rake**

Reporting Field	Description
Mesh/Ring Size	<Leave Blank>
Gear Quantity	<Leave Blank>
Gear Size	<Leave Blank>
Number of Hauls	<Leave Blank>
Tow/Soak Time	Total time spent fishing (hours : minutes)



## Species Code

Enter the species or species code for each species caught. You can find the species codes in the section [Species Codes by Category](#). If species were caught that are not provided in your eVTR app, please contact the app vendor for assistance.

---

**NOTE:** Species codes, units of measure, etc., may vary from those provided in the tables in the section [Species Codes by Category](#), depending on the eVTR application being used.

---

## Kept

- Commercial Trips  
Enter the hail weight (in pounds) of each species in the **Kept** field. Catch retained for home consumption should have its whole weight entered.
- Recreational Trips  
Enter the count for each species in the **Kept** field.
- Party & Charter Trips  
Enter the count for each species in the **Kept** field.

## Discarded

- Commercial Trips including Commercial Lobster and Clam ITQ Trips  
Enter the hail weight (in pounds) of each species in the **Discarded** field.
- Recreational Trips  
Enter the count of each species in the **Discarded** field.
- 1. Party & Charter Trips  
Enter the count of each species in the **Discarded** field.

## Dealer Information

Select or enter the federally permitted dealer purchasing your catch. If catch is not sold to a federally permitted dealer, enter the appropriate dealer code listed in [Table 26: Dealer Codes](#).

**Table 26: Dealer Codes**

Dealer Code	Definition
1	Seized for Violations
2	Sold to another vessel for bait or retained as bait
4	Retained for future sale
5	Sold to a non-Federal dealer (non-Federally regulated species only)
6	Sub legal catch landed for research
7	Legal catch landed for research (EFP trips only)
8	Landed, unmarketable catch (LUMF)
99998	Home consumption

## Date Sold

Select or enter the month, day and year that each species of your catch was sold.

## Offloading Port or Landing Port

For commercial trips including Commercial Lobster and Clam ITQ Trips, enter the port where each species was physically offloaded. For Party, Charter or Recreational trips, enter the port where the trip ended or landed.

## Species Codes by Category

Use this section to locate the alphabetic species codes by category (for example, groundfish or pelagics). Enter the species code into the Species Code field of your eVTR application.

**NOTE:** Species codes, units of measure, etc., may vary from those provided in the Species Codes tables, depending on the eVTR application being used. If you catch species that are not provided in your eVTR app, please contact the app vendor for assistance.

**Table 27: Species Codes for Groundfish**

Species Code	Species Name
COD	COD
CUSK	CUSK
HADD	HADDOCK
RHAK	HAKE, RED/LING
SHAK	HAKE, SILVER/WHITING
SPHAK	HAKE, SPOTTED
WHAK	HAKE, WHITE
MONK	MONKFISH/ANGLERFISH/GOOSEFISH
MONKH	MONK HEADS
MONKL	MONK LIVERS
MONKT	MONK TAILS
POUT	OCEAN POUT
POLL	POLLOCK
RED	REDFISH/OCEAN PERCH
CAT	WOLFISH/OCEAN CATFISH

**Table 28: Species Codes for Flounders**

Species Code	Species Name
FLDAB	AMERICAN PLAICE/DAB
FLFSP	FOURSPOT
FLSD	SAND-DAB/WINDOWPANE/BRILL

Species Code	Species Name
FLSOU	SOUTHERN
FLUKE	SUMMER/FLUKE
FLBB	WINTER/BLACKBACK
FLGS	WITCH/GRAY SOLE
FLYT	YELLOWTAIL
HAL	HALIBUT, ATLANTIC
HALG	HALIBUT, GREENLAND

Table 29: Species Codes for Skates

Species Code	Species Name
SKHEAD	SKATE, HEAD
SKRACK	SKATE, RACK
SKBARN	SKATE, BARNDOR
SKCL	SKATE, CLEARNOSE
SKL	SKATE, LITTLE (SUMMER)
SKLWIN	SKATE, LITTLE/WINNER
SKROSE	SKATE, ROSETTE
SKSM	SKATE, SMOOTH
SKTHOR	SKATE, THORNY
SKWIN	SKATE, WINTER
SKBARNW	SKATE WINGS, BARNDOR
SKCLW	SKATE WINGS, CLEARNOSE
SKLW	SKATE WINGS, LITTLE(SUMMER)
SKLWINW	SKATE WINGS, LITTLE/WINTER
SKROSEW	SKATE WINGS, ROSETTE
SKSMW	SKATE WINGS, SMOOTH
SKTHORW	SKATE WINGS, THORNY

Species Code	Species Name
SKHEAD	SKATE, HEAD

Table 30: Species Codes for Pelagics

Species Code	Species Name
ALWF	ALEWIFE
ANCH	ANCHOVY
HERR	HERRING, ATLANTIC
HRAT	HERRING, ATLANTIC THREAD
HRBB	HERRING, BLUE BACK
HRRD	HERRING, ROUND
MEN	MENHADEN
HSNS	HERRING AND SARDINE
ESC	ESCOLAR
SMLT	SMELT
BLU	BLUEFISH
BON	BONITO
BUT	BUTTERFISH
HALF	HALFBEAK
HARV	HARVEST FISH
MACK	MACKEREL, ATLANTIC
MACC	MACKEREL, ATLANTIC CHUB
MACB	MACKEREL, BULLET
FRI	MACKEREL, FRIGATE/BOO HOO
KGM	MACKEREL, KING
SSM	MACKEREL, SPANISH
SARSC	SARDINE, SCALED
SARSP	SARDINE, SPANISH

Species Code	Species Name
SAURY	SAURY, ATLANTIC
SHAD	SHAD, AMERICAN
SHDG	SHAD, GIZZARD
SHDH	SHAD, HICKORY
DOL	DOLPHIN FISH/MAHI MAHI
BUM	MARLIN, BLUE
WHM	MARLIN, WHITE
SUN	OCEAN SUNFISH/ MOOLA
SWO	SWORDFISH
OPAH	OPAH/MOONFISH

Table 31: Species Codes for Other Finfish (Northern)

Species Code	Species Name
SAL	ATLANTIC SALMON
BBR	BLACK BELLIED ROSEFISH
ARGT	ARGENTINE
BSB	SEA BASS, BLACK
CUN	CUNNER
GREN	GREENEYE
JDO	JOHN DORY
LANT	LANTERNFISH
LUMP	LUMPFISH
HATCH	HATCHETFISH/PEARLSIDES
PERW	PERCH, WHITE
PUF	PUFFER, NORTHERN
JPG	PORGY, JOLTHEAD
RPG	PORGY, RED

## Electronic Vessel Trip Report (eVTR) Reporting Instructions

Species Code	Species Name
WPG	PORGY, WHITEBONE
RSC	ROUGH SCAD
SAND	SAND LANCE
SCUL	SCULPINS
SCUP	SCUP/PORGY
SRAV	SEA RAVEN
SROB	SEA ROBINS
SIL	SILVERSIDES, ATLANTIC
SILNS	SILVERSIDE, NOT SPECIFIED
SPOT	SPOT
STB	STRIPED BASS/ROCKFISH
STUR	STURGEON, ATLANTIC
STSN	STURGEON, SHORT-NOSE
TAU	TAUTOG
TILEB	TILEFISH, BLUELINE
TILEG	TILEFISH, GOLDEN
TILES	TILEFISH, SAND
TOAD	TOADFISH, OYSTER
WHB	WHITING, BLACK

Table 32: Species Codes for Other Finfish (Southern)

Species Code	Species Name
BARRA	BARRACUDA
BAR	BARRELFISH
RUNB	BLUE RUNNER
COBIA	COBIA
CREV	CREVALLE
CRO	CROAKER, ATLANTIC
DRUMB	DRUM, BLACK
DRUMR	DRUM, RED
GAR	GARFISH
GRPBL	GROUPEL, BLACK
GRPCO	GROUPEL, CONEY
GAG	GROUPEL, GAG
GRASBY	GROUPEL, GRASBY
GRPREL	GROUPEL, RED
SCAMP	GROUPEL, SCAMP
GRPSN	GROUPEL, SNOWY
GRPW	GROUPEL, WARSA
GRPYE	GROUPEL, YELLOW EDGE
GRPR	GROUPEL, OTHER
GRUNT	GRUNT
GRUNTW	GRUNT, WHITE
TOMT	GRUNT, TOMTATE
HINDRED	HIND, RED
HINDRO	HIND, ROCK
HINDSP	HIND, SPECKLE
HGF	HOGFISH



## Electronic Vessel Trip Report (eVTR) Reporting Instructions

Species Code	Species Name
LADY	LADYFISH
MUL	MULLETS
NSG	STARGAZER, NORTHERN
PERSA	PERCH, SAND
PIG	PIGFISH
POM	POMPANO, COMMON
RIB	RIBBONFISH
BANK	SEA BASS, BANK
SHEEP	SHEEPSHEAD
SNAPR	SNAPPER, RED
SNAPV	SNAPPER, VERMILLION
SNAPG	SNAPPER, GRAY
SNAP	SNAPPER, OTHER
SPADE	SPADEFISH
SQRF	SQUIRRELFISH
TRIG	TRIGGERFISH
TRIGGR	TRIGGERFISH, GRAY
WAH	WAHOO
WKSQ	WEAKFISH/ SEA TROUT SQUETEAGUE
WKSP	WEAKFISH/ SEA TROUT SPOTTED
WHK	WHITING, KING/KINGFISH
WRK	WRECKFISH

**Table 33: Species Codes for Tuna**

Species Code	Species Name
ALB	ALBACORE
AMB	AMBERJACK
AMBGR	AMBERJACK, GREATER
AMBLR	AMBERJACK, LESSER
BET	BIG EYE
BLKFT	BLACKFIN
BFT	BLUEFIN
JACKA	JACK, ALMACO
LTA	LITTLE
RUDB	RUDDERFISH, BANDED
SKJ	SKIPJACK
YFT	YELLOWFIN

**Table 34: Species Codes for Sharks**

Species Code	Species Name
DGCH	DOGFISH, CHAIN
DGSM	DOGFISH, SMOOTH
DGSP	DOGFISH, SPINY
SHBA	SHARK, BASKING
SHBN	SHARK,BIGNOSE
SHBT	SHARK, BLACKTIP
SHBL	SHARK,BLUE
SHBU	SHARK,BULL
SHDU	SHARK,DUSKY
SHFI	SHARK, FINETOOTH
SHHA	SHARK,HAMMERHEAD

Species Code	Species Name
SHLE	SHARK, LEMON
SHML	SHARK, MAKO, LONGFIN
SHMS	SHARK, MAKOM SHORTFIN
SHNI	SHARK, NIGHT
SHNU	SHARK, NURSE
SHPB	SHARK, PORBEAGLE
SHST	SHARK, SAND TIGER
SHSB	SHARK, SANDBAR
SHSN	SHARK, SHARPNOSE
SHSI	SHARK, SILKY
SHSP	SHARK, SPINNER
SHTH	SHARK, THRESHER
SHTB	SHARK, THRESHER, BIGEYE
SHTI	SHARK, TIGER
SHWH	SHARK, WHITE
SHWT	SHARK, WHITETIP

Table 35: Species Codes for Other

Species Code	Species Name
EELA	EEL, AMERICAN
EELC	EEL, CONGER
CSKEEL	EEL, CUSK
HAG	HAGFISH
RAYCO	RAY, COWNOSE
RAYMA	RAY, MANTA ATLANTIC

Table 36: Species Codes for Shellfish

Species Code	Species Name
CLBA	CLAM, BLOOD ARC
CLA	CLAM, ARCTIC SURF
CLR	CLAM, RAZOR
CLSO	CLAM, SOFT
CLSU	CLAM, SURF
CLH	HARD QUAHOG
CLQU	OCEAN QUAHOG
CRB	CRAB, BLUE
CRC	CRAB, CANCER
CRG	CRAB, GREEN
CRH	CRAB, HERMIT
CRHS	CRAB, HORSESHOE
CRJ	CRAB, JONAH
CRJC	CRAB, JONAH CLAWS
CRL	CRAB, LADY
CRQS	CRAB, QUEEN SNOW
CRRD	CRAB, RED
CRRK	CRAB, ROCK
CRSP	CRAB, SPIDER
LOB	LOBSTER, AMERICAN
SHRM	SHRIMP (MANTIS)
SHRP	SHRIMP (PANAEOID)
SHR	SHRIMP (PANDALID)
SCAL	SCALLOP, SEA
SCALS	SCALLOP, SEA, IN SHELL

Species Code	Species Name
SCB	SCALLOP, BAY
SCC	SCALLOP,CALICO
SCI	SCALLOP,ICELANDIC
WHKC	WHELK, CHANNELED
WHKN	WHELK, KNOBBED
WHKL	WHELK, LIGHTNING
WHWV	WHELK, WAVED
MUS	MUSSELS
OYS	OYSTERS

Table 37: Species Codes for Invertebrates

Species Code	Species Name
CRUST	CRUSTACEAN, NOT SPECIFIED
JLY	JELLY FISH
MOLL	MOLLUSK, NOT SPECIFIED
OCT	OCTOPUS
CUC	SEA CUCUMBERS
URCH	SEA URCHINS
ILX	SQUID/ILLEX
LOL	SQUID/LOLIGO
STAR	STARFISH

Table 38: Species Codes for Sea Turtles

Species Code	Species Name
GRTU	GREEN
HATU	HAWKSBILL
RITU	KEEMPS RIDLEY
LETU	LEATHERBACK
LOTU	LOGGERHEAD
UNTU	UNIDENTIFIED

## Filling Out a Surf Clam / Ocean Quahog eVTR

For detailed instructions on submitting surf clam and ocean quahog eVTRs through GARFO's Fish Online eVTR application, refer to the following web page on the GARFO web site:

[How to Complete a Commercial eVTR for ITQ Clams Using Fish Online eVTR Web App](#)

Different eVTR apps collect the same core information, but those apps do not function identically. Each app may collect different information and field names can vary. This section provides the core fields (and definitions of each field) that can be collected by eVTR applications for surf clam and ocean quahog trips.

---

**NOTE:** Maine Mahogany trips must be submitted as a standard eVTR. See the section [Filling Out a Standard eVTR \(Including Maine Mahogany\)](#) for information on a standard eVTR.

---

## Vessel Name, USCG Documentation or State Registration, NMFS Vessel Permit Number

If required by your eVTR application, select or enter your vessel name or NMFS Vessel Permit Number.

## Date Landed

Enter the month, day and year you arrived in port. If your eVTR application requests 24-hour (military) time, refer to Table 3.

## Trip Type

Enter the trip type 'Clam ITQ-Commercial' or as appropriate based on your eVTR application.

## # of Crew

Enter the total number of crew members including the captain. If you have an observer on board do not include them in the crew count.

## Latitude

Enter the latitude where the majority of your haul-backs or fishing efforts occurred.

## Longitude

Enter the longitude where the majority of your haul-backs or fishing efforts occurred.

## Time at Sea

Report the time at sea (time left port to the time returning to port) as required by your eVTR application.

## Time Fished

Report the time fished (total time in which the dredge is pulled across the bottom) as requested by your eVTR application.

## Species Codes

Enter the species or species code for each species caught. You can find the species codes in the section [Species Codes by Category](#). If species were caught that are not provided in your eVTR application, please contact the app vendor for assistance.

---

**NOTE:** Species codes, units of measure, etc., may vary from those provided in the tables in the section [Species Codes by Category](#), depending on the eVTR application being used.

---

## Kept

Enter the hail weight or bushels of each species in the Kept field.

## Discarded

Enter the hail weight or discard percentage of each species in the **Discarded** field.

## Dealer Information

Select or enter the federally permitted dealer purchasing your catch. If catch is not sold to a federally permitted dealer, enter the appropriate dealer code listed in [Table 26: Dealer Codes](#).

## Offloading Port

Enter the port where each species was physically offloaded.

## Price per Bushel

Enter the approximate price per bushel of your surf clams or quahogs.

## Allocation Number

Enter the allocation number of the allocation holder for whom the vessel is fishing. If the vessel is being used to fish for more than one allocation in a trip, use a separate offload and tag range for each allocation number.

## Tag Numbers

Enter tag numbers used during offload. Split tags accordingly if more than one allocation number is being reported on a trip.

## Frequently Asked Questions (FAQs)

This section provides answers for the most frequently-asked questions that occur when reporting trips.

---

**NOTE:** Additional questions may be found at the web page [Frequent Questions: Electronic Vessel Trip Reporting](#).

---

1. **Question:** If I change gear type, mesh size, or chart area fished during a trip, how do I complete my eVTR?  
**Answer:** Complete a separate effort for any change in gear type, mesh/ring size or chart area.
2. **Question:** Do I have to complete a report if I am going out just to set gear?  
**Answer:** Yes. If you make a fishing trip to set gear, you must complete an eVTR. Provide Sail and Land information, trip category, number of crew and indicate this was a 'Set Gear' trip.
3. **Question:** Do I have to complete a report if I return to port prior to engaging in any fishing activity (e.g., mechanical breakdown, bad weather)?  
**Answer:** Yes. If you begin a fishing trip, but must return to port prior to engaging in any fishing activity, you must complete an eVTR. Provide Sail and Land information, trip category, number of crew (and anglers if necessary) and provide your reason for returning to port.
4. **Question:** Do I have to complete a report if I'm using my federally permitted vessel to fish recreationally?  
**Answer:** Yes. Federally permitted vessels must report every trip that they take. Recreational trips which use a federally permitted vessel require an eVTR to be submitted. Provide all trip and effort information including species caught and discarded. When reporting species kept, please use the **99998** Home Consumption dealer code.
5. **Question:** What if I don't land any fish on a trip?  
**Answer:** If you make a fishing trip and do not catch any fish, you must complete an eVTR. Provide all trip and effort information, then enter No Catch or NC into the Species Code field.
6. **Question:** Do I have to give my eVTR Trip ID to the dealer(s) that I sold my catch to?  
**Answer:** Yes. You are required to provide the eVTR Trip ID to each Federal dealer to whom you sell your catch. Trip IDs can be found in your eVTR application. They are automatically generated when you begin reporting your trip. If you cannot locate your eVTR Trip ID, contact your app vendor.



7. **Question:** I gave the wrong eVTR Trip ID to my dealer. Can I alter the eVTR Trip ID to match the number I gave my dealer?

**Answer:** No. The eVTR Trip ID is unique and cannot be altered. Contact your dealer(s) to have them correct their Dealer reports.

8. **Question:** How long am I required to keep records relating to my eVTRs?

**Answer:** You are not required to keep records upon which eVTRs are based. However, you may want to retain these records for their ability to help verify your catch data.

9. **Question:** If I'm fishing outside of the Greater Atlantic Region (e.g. in the Gulf of Mexico or off the coast of Florida or on the High Seas for Tuna) do I have to submit eVTRs?

**Answer:** Yes. If your vessel is issued a permit from the Greater Atlantic region you are required to submit an eVTR regardless of where the fishing activity took place or the species targeted.

10. **Question:** If I only hold a lobster permit, or only a crab permit, do I need to report?

**Answer:** You must report any effort in which you are targeting American Lobster or Jonah Crab and using pot gear. Those gear types include gear codes PTL and PTC.

## Chart Areas

This section provides maps of the possible chart areas that you can reference when you are entering your eVTR.

Figure 1: Gulf of Maine Chart Areas

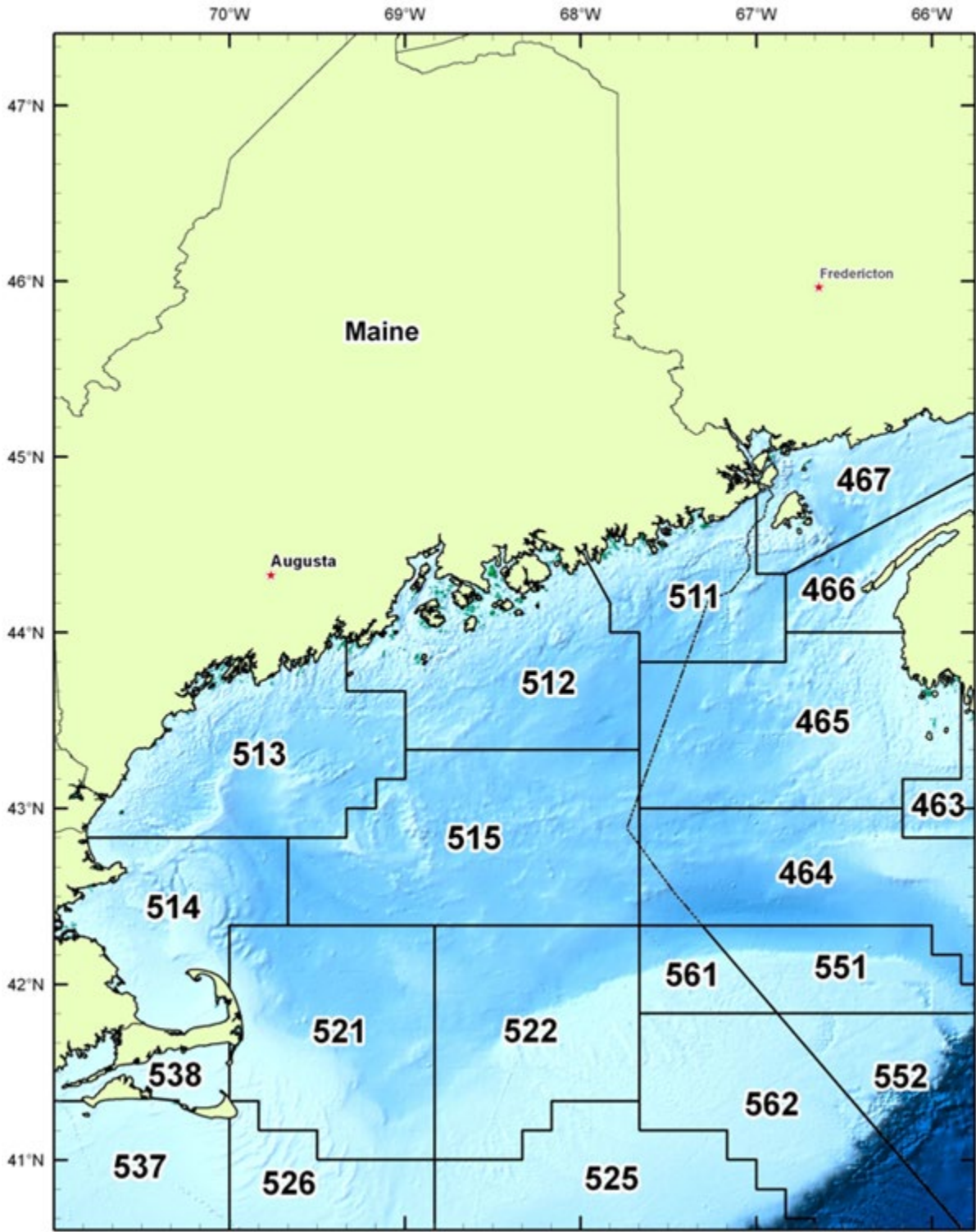


Figure 2: Georges Bank Chart Areas

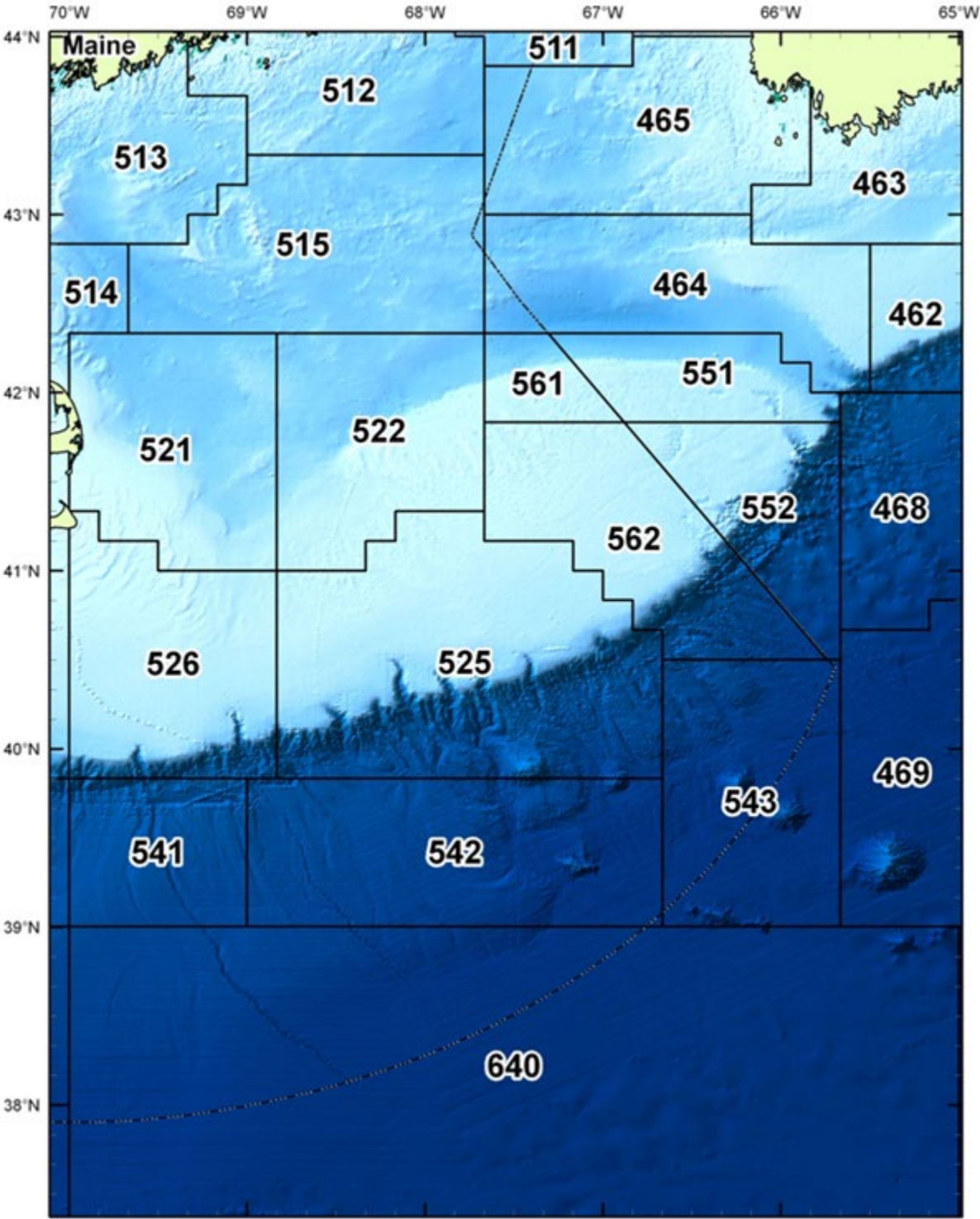




Figure 3: Southern New England Chart Areas

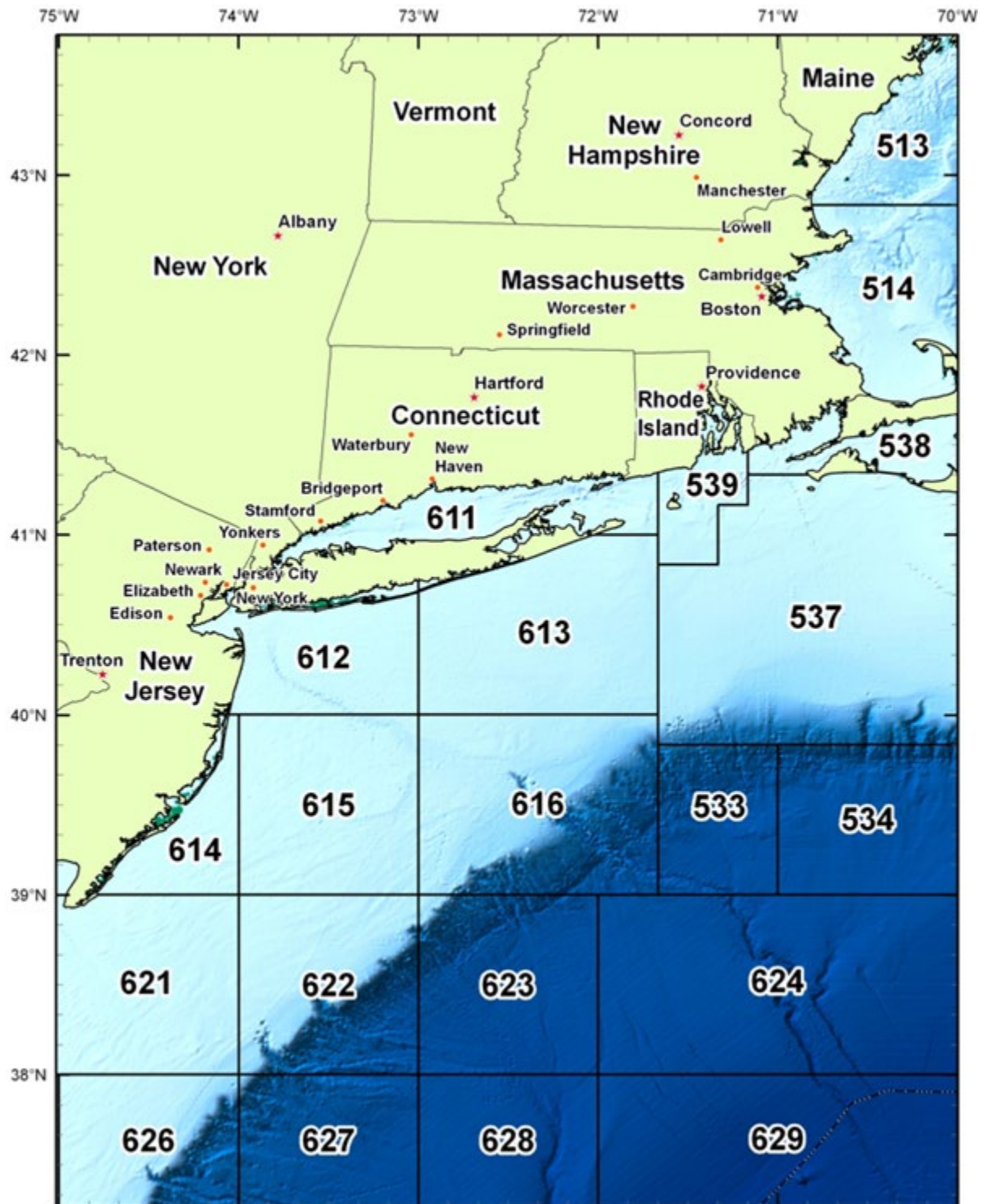


Figure 4: Mid-Atlantic Chart Areas

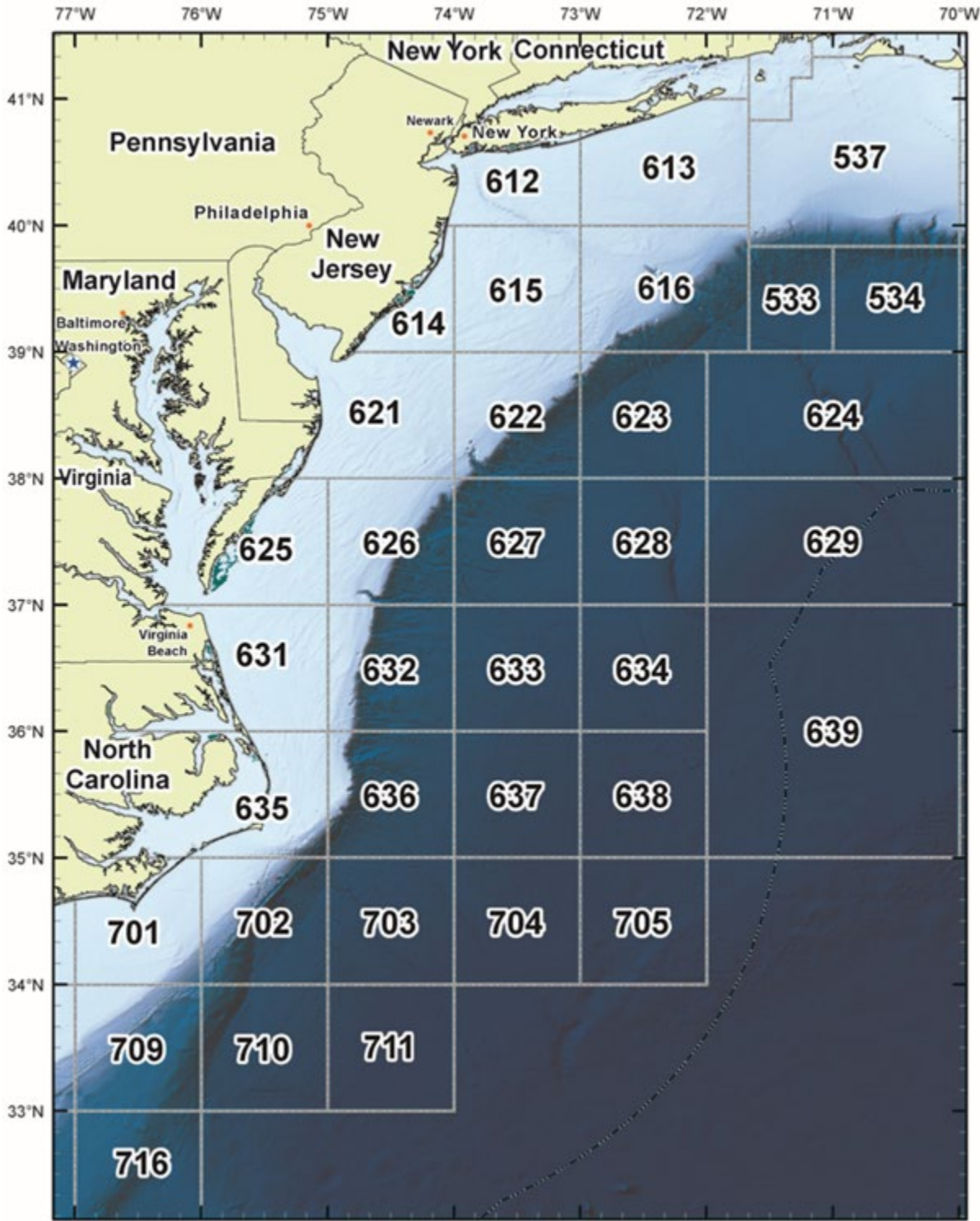




Figure 5: Massachusetts Bay and Cape Cod Bay Chart Areas

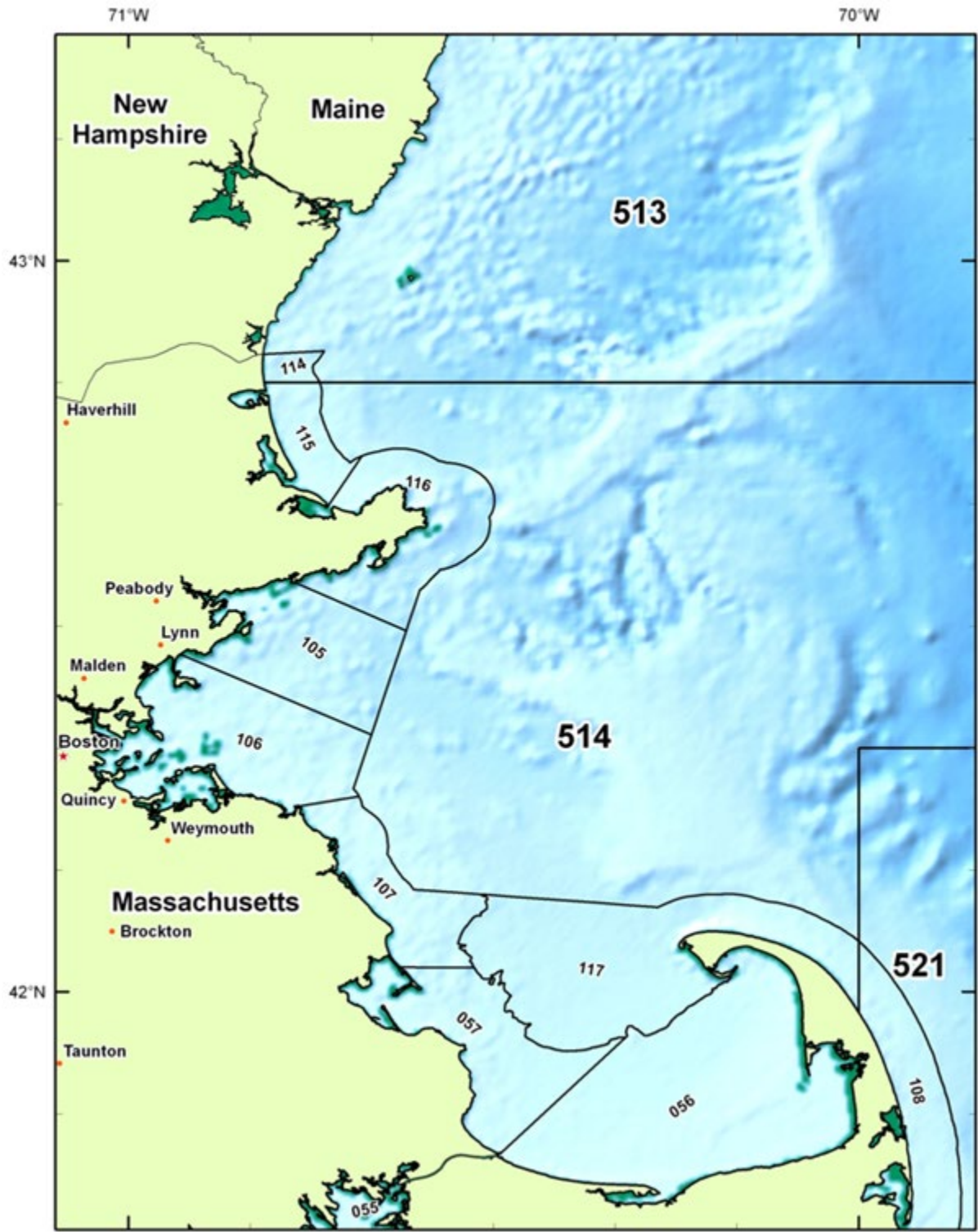


Figure 6: Rhode Island Sound Cape Cod and Islands Chart Areas



Figure 7: Long Island Sound and New York Chart Areas





Figure 8: Cape Hatteras and U. S. Southern Atlantic Chart Areas

