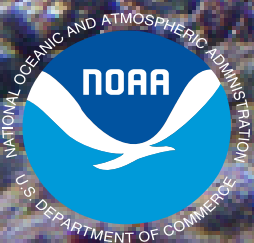


Fish Assessment Report

FY 2017 Quarter 4 Update

4



NOAA
FISHERIES

**Science and
Technology**

Overview

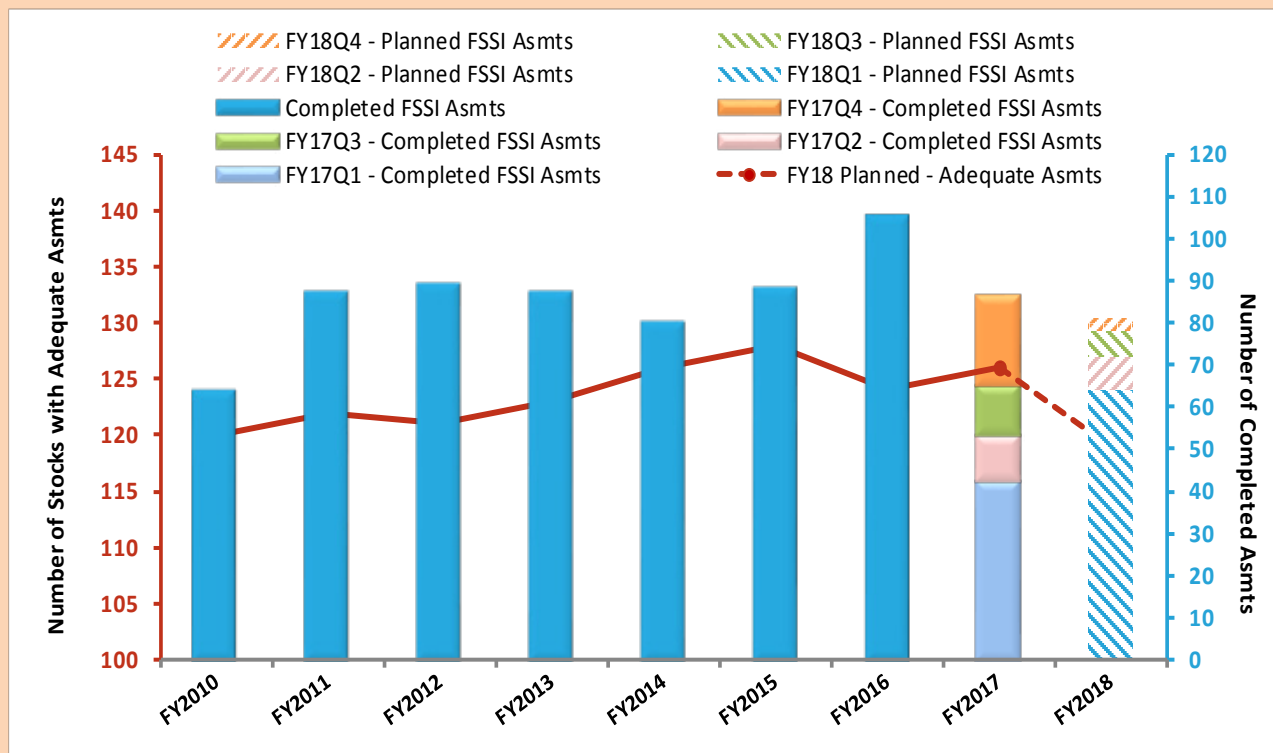
Stock assessments are key to sustainable fisheries management. They provide scientific information to determine the status of fish stocks and to set annual catch limits (ACLs) that prevent overfishing and optimize yield from our Nation's fisheries. This Fish Assessment Report provides a quarterly update on the status of NOAA Fisheries assessment activities for federally managed fish stocks. For more information on stock assessments and how they are conducted, please see the FAQ's on Page 7 of this report.



Black sea bass, *Centropristis striata*

NOAA Fisheries works with state and federal partners in each management area to conduct assessments for each fish stock or stock complex, selecting assessment level, type, and frequency based on a variety of factors such as fishery importance, ecosystem importance, stock biology, stock status, data availability, and assessment capacity. U.S. fish stocks are divided into two general categories for developing national reports. The most commercially and recreationally important domestic stocks are tracked as components of the Fish Stock Sustainability Index (FSSI). These 199 stocks are collectively referred to as 'FSSI stocks' and account for 85 percent of total fisheries catch. In FY 2017 NOAA Fisheries completed 86 assessments of FSSI stocks. The remaining (non-FSSI) stocks consist of 275 federally managed stocks and stock complexes. While there is often a high priority for assessing FSSI stocks, stock status and ACLs must be set for non-FSSI stocks as well. In FY 2017 NOAA Fisheries completed 131 assessments of non-FSSI stocks, complexes, or stock complex members.

NOAA Fisheries Assessment Trends for FSSI Stocks



Recent and projected assessment activity for federally managed stocks in the Fish Stock Sustainability Index (FSSI). At the end FY 2017, 126 of 199 (63.3 percent) FSSI stocks had adequate assessments. In FY 2018 this is projected to decrease to 119 of 199 (59.8 percent).

Completed and Planned Assessments

During Quarter 4, 28 stocks were assessed, including 21 FSSI and seven non-FSSI stocks

The Northeast region completed 12 FSSI stock assessments, one non-FSSI stock assessment of Gulf of Maine Atlantic Salmon, and three data updates during quarter four (Table 1). The FSSI stocks assessed this quarter included seven skate stocks off Georges Bank and the Southern New England coast, Atlantic cod and Haddock off Eastern Georges Bank, Scup off the Atlantic Coast, and Yellowtail flounder off Georges Bank. The assessments of Atlantic cod, Yellowtail flounder, and Haddock were absent from the initial schedule. The assessment of Scup was initially planned as a data update.

The Southeast region did not complete any stock assessments this quarter. It did complete an examination of six data-limited stocks in the Caribbean: Caribbean spiny lobster off St. Croix and St. Thomas, Yellowtail snapper and Hogfish off Puerto Rico, St. Croix spotlight parrotfish, and St. Thomas / St. John Queen Triggerfish. While these analyses provided useful information, they did not lead to formal stock assessments.

The West Coast region completed 9 FSSI and five non-FSSI stock assessments in quarter four. All of the FSSI stock assessments were of west coast groundfish stocks. Two of them, Lingcod and Blue / Deacon rockfish, were split into new, geographically distinct stock sub-units (See Appendix A). These splits were not planned. All but one of the non-FSSI assessments in the West Coast region were for HMS stocks. The other was for Yellowtail rockfish off the Southern Pacific Coast. The Yellowtail rockfish assessment was not on the initial schedule, and was not accepted for use in management. The planned assessment of Pacific ocean perch off the Pacific Coast (FSSI stock), was delayed to quarter one of FY18 due to delays encountered during its review.

The Alaska region did not complete any stock assessments this quarter. Four non-FSSI stock assessments of Alaskan Coho and Chinook salmon stocks were planned. They are now expected in quarter one of FY18 due to delays encountered by the Alaska Department of Fish and Game (they lead these salmon assessments). The count of Alaska assessments for quarter three increased by one this quarter because the Golden king crab assessment off the Aleutian Islands was split into two regional assessments (Eastern and Western Aleu-

tian Islands). This split was made because the assessment includes independent analyses of each region.

The West Pacific region completed an assessment of North Pacific Blue shark, a non-FSSI stock, in quarter four. The assessment planned for North Pacific Thresher shark was delayed to FY18 because extensions were required to complete the assessment and review process.

At the end of FY 2017, 63.3 percent (126/199) of FSSI stocks have adequate assessments. This number increased from quarter 3 because two accounting errors were discovered (Appendix D). In FY 2018, NOAA Fisheries expects to complete 81 assessments for FSSI stocks and 116 assessments of non-FSSI stocks. The number of stocks with adequate assessments is expected to decrease to 59.8 percent (119/199). This decrease is primarily due to 13 stock assessments that will become inadequate at the end of FY 18 due to their age.

This report's appendices provide detailed information on the assessments completed in FY 2017 and planned for FY 2018. Appendix A lists the assessments of FSSI stocks completed in FY 2017. Appendix B details the assessments of non-FSSI stocks completed in FY 2017. Appendix C provides a list of the assessments planned for FSSI and non-FSSI stocks in FY 2018. Appendix D lists the most recent assessment of all FSSI stocks and whether each stock is considered adequately assessed. These appendices provide the best information available at the time of reporting and are subject to change. Changes, other than those related to assessment completion, are shown in red.

Many stock assessments rely on data collected by NOAA's scientific surveys of fish stocks. NOAA Fisheries completed 21 scientific surveys of fish stocks during quarter 4 (Table 2).¹ The total number of surveys completed in FY 2017 was 62. NOAA Fisheries has 56 surveys planned for FY 2018.

For more information on NOAA Fisheries' stock assessments, please visit the NOAA Fisheries' National Stock Assessment Program website.²

1 <https://www.st.nmfs.noaa.gov/st4/ifso/faq.html>

2 <https://www.fisheries.noaa.gov/topic/population-assessments>

Completed Assessments and Surveys

Table 1. FY 2017 Completed Assessments

Region	Quarter 1		Quarter 2		Quarter 3		Quarter 4		Quarter 4 Highlights
	FSSI	Non - FSSI	FSSI	Non - FSSI	FSSI	Non - FSSI	FSSI	Non - FSSI	
Northeast	0	0	4	0	3	0	12	1	NE Skate stocks, Atlantic cod and Haddock off Georges Bank, Scup off the Atlantic Coast
Southeast	5	4	4	0	1	4	0	0	No assessments completed
West Coast ¹	0	0	2	64	6	0	9	5	Lingcod and Blue / Deacon rockfish off the Northern and Southern Pacific Coasts, Northern Pacific Coast Yellowtail Rockfish
West Pacific ²	0	0	0	27	0	0	0	1	North Pacific Blue shark
Alaska	37	23	1	0	2	2	0	0	No assessments completed
TOTAL	42	27	11	91	12	6	21	7	FY 2017 Total: 217

Table 2. FY 2017 Completed Surveys

Region	Quarter 1		Quarter 2		Quarter 3		Quarter 4		Quarter 4 Highlights
	NOAA	Charter	NOAA	Charter	NOAA	Charter	NOAA	Charter	
Northeast	1	1	1	0	4	1	0	1	Northern shrimp
Southeast	3	0	0	0	5	0	6	1	SEAMAP Fall Plankton, Groundfish, and Reef Fish, Shark/Red Snapper Bottom Longline
West Coast ¹	2	4	3	0	4	1	2	2	Hake, California Hook and Line, West Coast Pelagic, CalCOFI Summer
West Pacific ²	1	0	1	0	3	0	0	0	None Completed
Alaska	1	0	2	0	2	1	3	6	Walleye Pollock Acoustic, Salmon Recruitment, Groundfish, Movement and Migration of Key Alaska Fishes, BASIS, FISHPAC EFH
TOTAL	8	5	7	0	18	3	11	10	FY 2017 Total: 44 / 18

Footnotes:

¹ The west coast region includes assessments conducted by the northwest and southwest Fisheries Science Centers and by international commissions for the eastern Pacific Ocean in which those centers participate. This includes Pacific coast groundfish, Pacific coast salmon, and highly migratory species.

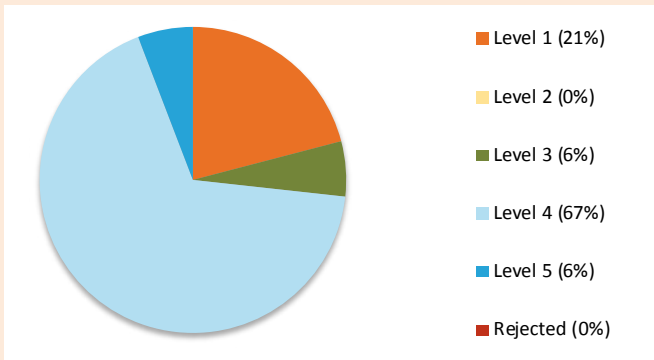
² The west Pacific region includes assessments conducted by the Pacific Islands Fisheries Science Center and international commissions for the U.S. west coast fisheries for highly migratory species and Pacific pelagic fisheries of the Western Pacific Regional Ecosystem.

Model Complexity and Assessment Type

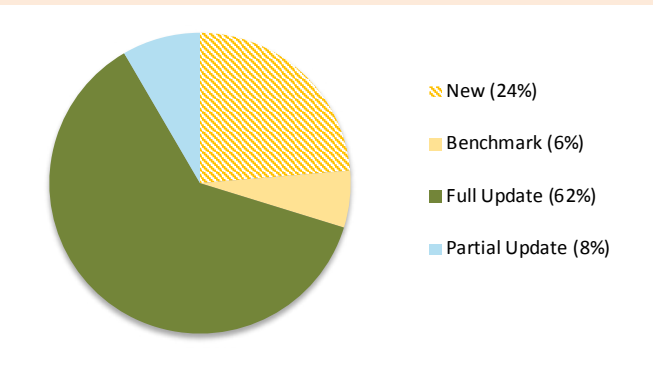
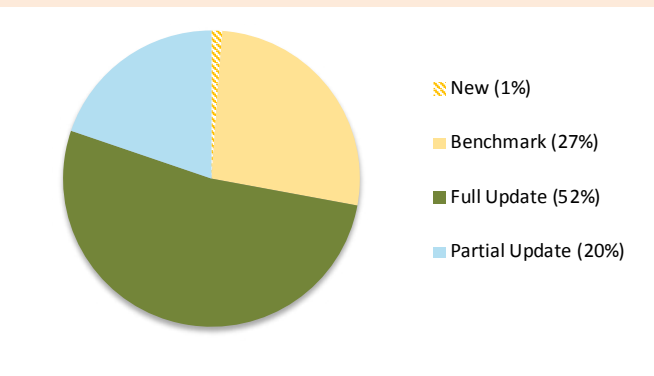
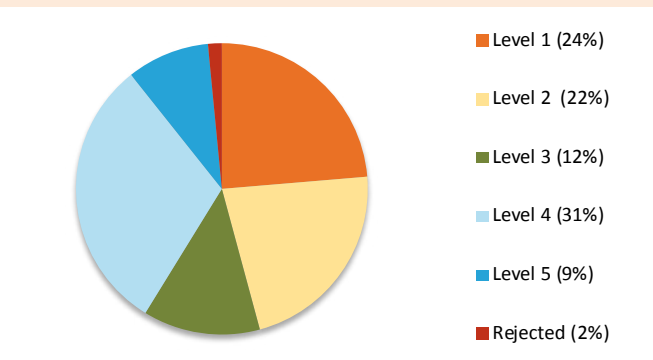
In quarter 4 of FY 2017, 21 FSSI stocks were assessed. One was a new assessment, five were benchmarks, eleven were full updates, and four were partial updates. Of those, 13 provide the full suite of advice and are considered adequate (level 3 or higher). Seven non-FSSI stock assessments were completed, six were completed at level three or higher and one was rejected (“adequacy” is reported only for FSSI stocks). Index-based and simple life history approaches (level 1 and 2) were used in the assessment of eight FSSI stocks and one non-FSSI stock. These assessments provide important science-based advice for the management of data-limited stocks but fall below the “adequate” threshold. The level and type of all assessments completed in FY 2017 are displayed in the figures below.

Assessment Levels and Assessment Types for Assessments Completed in FY 2017

FSSI Stocks



Non-FSSI Stocks



Assessment Level	Description
1	An indicator analysis using time series of survey data, catch and effort, or a onetime abundance estimate
2	Simple equilibrium models applied to life history information; e.g. yield per recruit based on mortality
3	Equilibrium and non-equilibrium production models aggregated over age and/or over size
4	Size, stage, or age structured models
5	Level 3 or 4 models that directly include ecosystem considerations

Assessment Type*	Description
New	First assessment conducted for a given stock
Benchmark	Comprehensive investigations using assessment approaches that substantially differ from previous iterations
Full Update	Assessments that include the most recent year of survey data and minor revisions to the assessment model
Partial Update	Assessments that used the latest catch estimates to advance the previous projections by one or more years to develop catch advice

* Data updates are updates of survey indices and catch time series that are tracked for record-keeping purposes, but do not constitute stock assessments.

Quarterly Highlight: The Untrawable Habitat Strategic Initiative

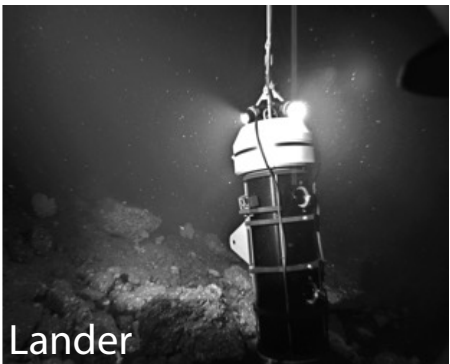
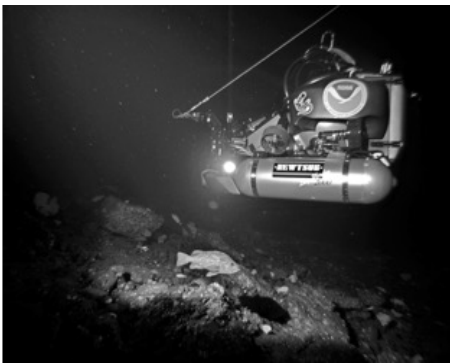
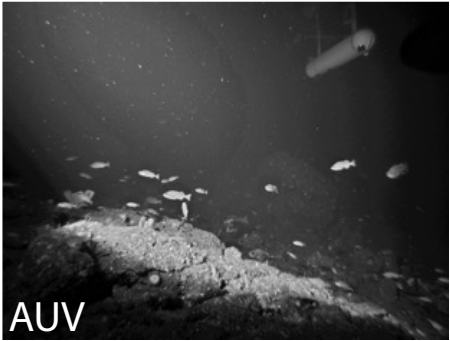
Ocean ecosystems are a patchwork of habitats that NOAA Fisheries samples using a variety of methods. Bottom trawling is the prevailing means of data collection; however, its coverage is not ubiquitous because it cannot successfully sample complex habitats that are too steep, too rocky, or contain delicate and easily disrupted features such as corals. While some techniques are available for collecting data in these untrawable areas, they generally do not provide the quantitative measures of abundance needed to support robust (level 3, 4, or 5) stock assessments. NOAA Fisheries classifies most species that preferentially inhabit these areas as data-limited.

All NOAA Fisheries Science Centers are actively engaged in developing technologies to sample untrawable habitats. One such technology is optical (or visual) sampling. Methods to see fish underwater with cameras have been available for decades and NOAA Fisheries regularly uses them to survey sessile organisms. In recent years, improved camera resolution and advanced battery technologies have greatly increased the use of optical systems on advanced platforms to survey fish. However, before these tools can provide quantitative estimates of fish abundance, their sampling efficiency must be calibrated. This requires a thorough understanding of the behavioral responses of fish to these gears.

NOAA Fisheries' Untrawable Habitat Strategic Initiative (UHSI) research group is actively working to further our understanding of the interactions between these optical sampling devices and fish. In partnership with academic and other stakeholders, the UHSI has just completed one of the most ambitious at-sea experiments ever conducted that assessed the efficiency and biases of multiple technologies in estimating fish abundance. For the experiment, the UHSI developed an in-situ test bed method that involved placing numerous stationary optical (Figure 1) and acoustic cameras on a section of rocky ocean bottom. These surveillance camera systems documented the reaction of the fishes to mobile observing devices, such



Figure 1: (Top left) Surveillance platforms (optical and acoustic cameras) photographed from the human-occupied submersible (HOV). (Right) Survey vehicles photographed by the surveillance camera systems including an autonomous underwater vehicle (AUV), a submarine, and a lander. Each of the vehicles made multiple passes in front of the surveillance platform for data-collection purposes.



as Autonomous Underwater Vehicles (AUVs), Remotely Operated Vehicles (ROVs) and Human Occupied Submarine Vehicles (HOVs), as the vehicles moved through the testbed area (Figure 1).

The results of this work provide crucial information on biases associated with optical survey data collected using ROVs, HOVs, and AUVs. Understanding these biases will allow NOAA Fisheries scientists to integrate these data into stock assessments and, for the first time, to develop improved assessments that include data from all occupied habitats. For data-limited species in particular, this resource could facilitate the construction of more accurate stock assessment models that fully estimate population status and sustainable catch levels, thereby helping to optimize US fishery harvest. Finally, optical methods provide simultaneous information on all components of the ecosystem, a comprehensive view needed for integrated ecosystem assessments.

Frequently Asked Questions

What is a stock assessment?

A stock assessment is the process of collecting, analyzing, and reporting demographic information to determine the effects of fishing (and other drivers) on fish populations and, to the extent possible, predict future catch and stock status.

What data are used in stock assessments?

Stock assessments are typically based on models of fish populations that require three primary categories of data inputs: catch, abundance, and biology, although data-limited assessments can be conducted when one or more of these data types are missing. Data inputs must be accurate and timely to ensure the highest quality stock assessments. To the extent feasible, ecosystem and environmental factors that affect fish stocks are included.

Why do we assess stocks?

NOAA Fisheries' stock assessments provide high-quality science information needed by managers to support sustainable fisheries as components of resilient ecosystems, communities, and economies. Assessments provide the scientific basis for determining if a stock is overfished or experiencing overfishing, calculating sustainable harvest rates, and forecasting catch levels that would implement that rate.

What is an adequate assessment?

Assessments are considered adequate when they use modeling approaches that are able to address long-term population dynamics of the stock (i.e. assessment level of 3 or above according to the 2001 Marine Fisheries Stock Assessment Improvement Plan), have been updated within five years, and are recommended as best scientific information available after being subjected to regional peer review processes. The definition of an adequate assessment will change as NOAA Fisheries finalizes and implements a new Stock Assessment Improvement Plan (draft expected by the end of FY 2017).

Why does the schedule of planned assessments change?

The schedule of planned assessments is provided by each region at the beginning of the fiscal year and updated in this report as new information becomes available. Changes to the schedule may occur as the feasibility and time needed to conduct assessments are refined, particularly for stocks previously unasessed or assessments using innovative methods, and as assessment needs are updated in coordination with our regional and international partners.

Where can I find more information?

<http://www.st.nmfs.noaa.gov/stock-assessment>

<https://www.st.nmfs.noaa.gov/sisPortal/sisPortalMain.jsp>

<http://www.st.nmfs.noaa.gov/StockAssessment/>

Alaska Fisheries Science Center --

<http://www.afsc.noaa.gov/>

Northwest Fisheries Science Center --

<https://www.nwfsc.noaa.gov/>

Southwest Fisheries Science Center --

<https://swfsc.noaa.gov/>

Pacific Island Fisheries Science Center --

<http://www.pifsc.noaa.gov/>

Southeast Fisheries Science Center --

<http://www.sefsc.noaa.gov/>

Northeast Fisheries Science Center --

<http://www.nefsc.noaa.gov/>

Appendix A. Assessment activity for stocks and stock complexes included on the FSSI by quarter for FY 2017.

Completed Assessments for FSSI Stocks - FY 2017 Quarter 1 (October - December, 2016)

Science Center(s) ¹	Jurisdiction ²	Stock	Asmt Level ³	Asmt Type ⁴	Adequate	Notes
AFSC	NPFMC	Alaska plaice - Bering Sea / Aleutian Islands	4	Full Update	Y	
AFSC	NPFMC	Arrowtooth flounder - Bering Sea / Aleutian Islands	5	Benchmark	Y	
AFSC	NPFMC	Arrowtooth flounder - Gulf of Alaska	4	Partial Update	Y	
AFSC	NPFMC	Atka mackerel - Bering Sea / Aleutian Islands	4	Benchmark	Y	
AFSC	NPFMC	Bering Sea / Aleutian Islands Blackspotted and Rougheye Rockfish Complex	4	Benchmark	Y	
AFSC	NPFMC	Flathead sole - Bering Sea / Aleutian Islands	5	Full Update	Y	
AFSC	NPFMC	Northern rock sole - Bering Sea / Aleutian Islands	4	Full Update	Y	
AFSC	NPFMC	Alaska skate - Bering Sea / Aleutian Islands	4	Full Update	Y	
AFSC	NPFMC	Bering Sea / Aleutian Islands Other Skates Complex	3	Full Update	Y	
AFSC	NPFMC	Blue king crab - Pribilof Islands	1	Full Update	N	
AFSC	NPFMC	Blue king crab - Saint Matthew Island	4	Full Update	Y	
AFSC	NPFMC	Dusky rockfish - Gulf of Alaska	4	Partial Update	Y	
AFSC	NPFMC	Flathead sole - Gulf of Alaska	4	Partial Update	Y	
AFSC	NPFMC	Greenland halibut - Bering Sea / Aleutian Islands	4	Benchmark	Y	
AFSC	NPFMC	Gulf of Alaska Blackspotted and Rougheye Rockfish Complex	4	Partial Update	Y	
AFSC	NPFMC	Dover sole - Gulf of Alaska	4	Partial Update	Y	
AFSC	NPFMC	Gulf of Alaska Other Deepwater Flatfish Complex	1	Partial Update	N	
AFSC	NPFMC	Yelloweye rockfish - Gulf of Alaska	3	Partial Update	Y	
AFSC	NPFMC	Northern rock sole - Gulf of Alaska	4	Partial Update	Y	
AFSC	NPFMC	Gulf of Alaska Other Shallow Water Flatfish Complex	3	Partial Update	Y	
AFSC	NPFMC	Shortspine thornyhead - Gulf of Alaska	3	Partial Update	Y	
AFSC	NPFMC	Northern rockfish - Bering Sea / Aleutian Islands	4	Benchmark	Y	
AFSC	NPFMC	Northern rockfish - Western / Central Gulf of Alaska	4	Partial Update	Y	

National Marine Fisheries Service

Updated FY 2017 Quarter 4

Completed Assessments for FSSI Stocks - FY 2017 Quarter 1 (October - December, 2016)

Science Center(s) ¹	Jurisdiction ²	Stock	Asmt Level ³	Asmt Type ⁴	Adequate	Notes
AFSC	NPFMC	Pacific cod - Bering Sea	4	Benchmark	Y	CIE Reviewed
AFSC	NPFMC	Pacific cod - Gulf of Alaska	4	Benchmark	Y	
AFSC	NPFMC	Pacific ocean perch - Bering Sea / Aleutian Islands	4	Benchmark	Y	
AFSC	NPFMC	Pacific ocean perch - Gulf of Alaska	4	Partial Update	Y	
AFSC	NPFMC	Red king crab - Bristol Bay	4	Full Update	Y	
AFSC	NPFMC	Red king crab - Pribilof Islands	1	Full Update	N	
AFSC	NPFMC	Rex sole - Gulf of Alaska	4	Partial Update	Y	
AFSC	NPFMC	Sablefish - Eastern Bering Sea / Aleutian Islands / Gulf of Alaska	5	Benchmark	Y	CIE Reviewed
AFSC	NPFMC	Snow crab - Bering Sea	4	Full Update	Y	
AFSC	NPFMC	Southern Tanner crab - Bering Sea	4	Full Update	Y	
AFSC	NPFMC	Walleye pollock - Aleutian Islands	4	Full Update	Y	
AFSC	NPFMC	Walleye pollock - Eastern Bering Sea	4	Benchmark	Y	CIE Reviewed
AFSC	NPFMC	Walleye pollock - Western / Central Gulf of Alaska	4	Benchmark	Y	
AFSC	NPFMC	Yellowfin sole - Bering Sea / Aleutian Islands	5	Full Update	Y	
SEFSC	GMFMC	Royal red shrimp - Gulf of Mexico	1	Full Update	N	Omitted from Q1 Report
SEFSC	SAFMC	Brown rock shrimp - Southern Atlantic Coast	1	Full Update	N	
SEFSC	SAFMC	Brown shrimp - Southern Atlantic Coast	1	Full Update	N	
SEFSC	SAFMC	Pink shrimp - Southern Atlantic Coast	1	Full Update	N	
SEFSC	SAFMC	White shrimp - Southern Atlantic Coast	1	Full Update	N	

Completed Assessments for FSSI Stocks - FY 2017 Quarter 2 (January - March, 2017)

Science Center(s) ¹	Jurisdiction ²	Stock	Asmt Level ³	Asmt Type ⁴	Adequate	Notes
AFSC	NPFMC	Red king crab - Norton Sound	4	Full Update	Y	
NEFSC	MAFMC	Atlantic surfclam - Mid-Atlantic Coast	4	Benchmark	Y	Delayed from Q4 FY16, Q4 Data Update scheduled
NEFSC	MAFMC	Black sea bass - Mid-Atlantic Coast	4	Benchmark	Y	
NEFSC	MAFMC	Tilefish - Mid-Atlantic Coast	4	Full Update	Y	Assessment completed in March, planned for Q3, omitted from Q2 report
NEFSC	NEFMC	Witch flounder - Northwestern Atlantic Coast	1	Benchmark	N	Initially planned for level 4

National Marine Fisheries Service

Updated FY 2017 Quarter 4

Completed Assessments for FSSI Stocks - FY 2017 Quarter 2 (January - March, 2017)

Science Center(s) ¹	Jurisdiction ²	Stock	Asmt Level ³	Asmt Type ⁴	Adequate	Notes
NW/SW	PFMC	Chinook salmon - California Central Valley: Sacramento (fall)	3	Full Update	Y	
NW/SW	PFMC	Chinook salmon - Northern California Coast: Klamath (fall)	4	Full Update	Y	
SEFSC	GMFMC	Brown shrimp - Gulf of Mexico	4	Full Update	Y	
SEFSC	GMFMC	Greater amberjack - Gulf of Mexico	4	Full Update	Y	
SEFSC	GMFMC	Pink shrimp - Gulf of Mexico	4	Full Update	Y	
SEFSC	GMFMC	White shrimp - Gulf of Mexico	4	Full Update	Y	

Completed Assessments for FSSI Stocks - FY 2017 Quarter 3 (April - June, 2017)

Science Center(s) ¹	Jurisdiction ²	Stock	Asmt Level ³	Asmt Type ⁴	Adequate	Notes
AFSC	NPFMC	Golden king crab - Eastern Aleutian Islands	4	Benchmark	Y	Geographic split in assessment model
AFSC	NPFMC	Golden king crab - Western Aleutian Islands	4	Benchmark	Y	Geographic split in assessment model
NEFSC	MAFMC	Atlantic mackerel - Gulf of Maine / Cape Hatteras	NA	Data Update	NA	
NEFSC	MAFMC	Bluefish - Atlantic Coast	NA	Data Update	NA	FY2015 Level 4 Benchmark
NEFSC	MAFMC	Butterfish - Gulf of Maine / Cape Hatteras	5	Full Update	Y	
NEFSC	MAFMC	Longfin inshore squid - Georges Bank / Cape Hatteras	1	Full Update	N	
NEFSC	MAFMC	Northern shortfin squid - Northwestern Atlantic Coast	NA	Data Update	N	
NEFSC	MAFMC	Ocean quahog - Atlantic Coast	4	Benchmark	Y	
NW/SW	PFMC	Arrowtooth flounder - Pacific Coast	4	Full Update	Y	Planned for Q4
NW/SW	PFMC	Blackgill rockfish - Southern California	4	Full Update	Y	
NW/SW	PFMC	Bocaccio - Southern Pacific Coast	4	Full Update	Y	
NW/SW	PFMC	Darkblotched rockfish - Pacific Coast	4	Full Update	Y	
SEFSC	SAFMC	Red grouper - Southern Atlantic Coast	4	Standard	Y	
SWFSC	PFMC	Pacific sardine - Pacific Coast	4	Benchmark	Y	
SWFSC	PFMC	Pacific chub mackerel - Pacific Coast	4	Full Update	Y	

Completed Assessments for FSSI Stocks - FY 2017 Quarter 4 (July - September, 2017)

Science Center(s) ¹	Jurisdiction ²	Stock	Asmt Level ³	Asmt Type ⁴	Adequate	Notes
NEFSC	MAFMC	Scup - Atlantic Coast	4	Partial Update	Y	On initial schedule as data update
NEFSC	MAFMC	Atlantic surfclam - Mid-Atlantic Coast	NA	Data Update	Y	FY2017 level 4 Benchmark

National Marine Fisheries Service
Updated FY 2017 Quarter 4

Completed Assessments for FSSI Stocks - FY 2017 Quarter 4 (July - September, 2017)

Science Center(s) ¹	Jurisdiction ²	Stock	Asmt Level ³	Asmt Type ⁴	Adequate	Notes
NEFSC	MAFMC	Summer flounder - Mid-Atlantic Coast	NA	Data Update	Y	FY2016 level 4 Benchmark
NEFSC	NEFMC	Atlantic cod - Eastern Georges Bank (substock)	4	Full Update	Y	Assessment not on initial schedule
NEFSC	NEFMC	Barndoor skate - Georges Bank / Southern New England	1	Full Update	N	
NEFSC	NEFMC	Clearnose skate - Southern New England / Mid-Atlantic	1	Full Update	N	
NEFSC	NEFMC	Haddock - Eastern Georges Bank (substock)	4	Full Update	Y	Assessment not on initial schedule
NEFSC	NEFMC	Little skate - Georges Bank / Southern New England	1	Full Update	N	
NEFSC	NEFMC	Rosette skate - Southern New England / Mid-Atlantic	1	Full Update	N	
NEFSC	NEFMC	Sea scallop - Northwestern Atlantic Coast	4	Partial Update	Y	
NEFSC	NEFMC	Smooth skate - Gulf of Maine	1	Full Update	N	
NEFSC	NEFMC	Thorny skate - Gulf of Maine	1	Full Update	N	
NEFSC	NEFMC	Yellowtail flounder - Georges Bank	1	Full Update	N	Assessment not on initial schedule
NEFSC	NEFMC	Winter skate - Georges Bank / Southern New England	1	Full Update	N	
NEFSC	NEFMC	Spiny dogfish - Atlantic Coast	NA	Data Update	Y	FY2015 level 4 Benchmark
NW/SW	PPMC	Blue rockfish / Deacon rockfish - California	4	Benchmark	Y	Stock split geographically
NW/SW	PPMC	Blue rockfish / Deacon rockfish - Oregon	4	New	Y	Stock split geographically
NW/SW	PPMC	California scorpionfish - Southern California	4	Full Update	Y	
NW/SW	PPMC	Canary rockfish - Pacific Coast	4	Partial Update	Y	
NW/SW	PPMC	Chilipepper - Southern Pacific Coast	4	Partial Update	Y	
NW/SW	PPMC	Lingcod - Northern Coast (WA / OR)	4	Benchmark	Y	Stock split geographically
NW/SW	PPMC	Lingcod - Southern Coast (CA)	4	Benchmark	Y	Stock split geographically
NW/SW	PPMC	Yelloweye rockfish - Pacific Coast	4	Benchmark	Y	
NW/SW	PPMC	Yellowtail rockfish - Northern Pacific Coast	4	Benchmark	Y	

National Marine Fisheries Service
Updated FY 2017 Quarter 4

Footnotes

¹ NOAA Fisheries Science Centers include Alaska Fisheries Science Center (AFSC), Northeast Fisheries Science Center (NEFSC), Northwest Fisheries Science Center (NWFSC), Pacific Islands Fisheries Science Center (PIFSC), Southeast Fisheries Science Center (SEFSC) and Southwest Fisheries Science Center (SWFSC). In some cases, assessments are conducted by multiple science centers (e.g. NW/SW and SW/PI).

² Jurisdictions include Caribbean Fishery Management Council (CFMC), Gulf of Mexico Fishery Management Council (GMFMC), Atlantic Highly Migratory Species Division (HMS), Mid-Atlantic Fishery Management Council (MAFMC), New England Fishery Management Council (NEFMC), North Pacific Fishery Management Council (NPFMC), Pacific Fishery Management Council (PFMC), South Atlantic Fishery Management Council (SAFMC) and Western Pacific Fishery Management Council (WPFMC).

³ Level of complexity of assessment methods used for the particular stock. Generally reflects the availability of data and the value or importance of the fishery. Levels are described in the Stock Assessment Improvement Plan (<http://www.st.nmfs.noaa.gov/StockAssessment/index.html>). A negative level indicates that an assessment was attempted at that level of complexity, but the effort was not accepted in its technical review.

⁴ Data Updates are not counted as stock assessments.

* Changes in the assessment schedule are indicated by red, bold font.

Appendix B. Assessment activity for non-FSSI stocks, stock complexes and complex members in FY 2017.

Completed Assessments for Non-FSSI Stocks - FY 2017 Quarter 1 (October - December, 2016)

Science Center(s) ¹	Jurisdiction ²	Stock	Asmt Level ³	Asmt Type ⁴	Notes on Assessment
AFSC	NPFMC	Atka mackerel - Gulf of Alaska	1	Benchmark	
AFSC	NPFMC	Giant octopus - Bering Sea / Aleutian Islands	1	Full Update	
AFSC	NPFMC	Bering Sea / Aleutian Islands Other Flatfish Complex	3	Full Update	
AFSC	NPFMC	Bering Sea / Aleutian Islands Other Rockfish Complex	1	Full Update	
AFSC	NPFMC	Bering Sea / Aleutian Islands Sculpin Complex	3	Full Update	
AFSC	NPFMC	Bering Sea / Aleutian Islands Shark Complex	1	Full Update	
AFSC	NPFMC	Bering Sea / Aleutian Islands Squid Complex	1	Full Update	
AFSC	NPFMC	Giant octopus - Gulf of Alaska	1	Partial Update	
AFSC	NPFMC	Gulf of Alaska Other Rockfish Complex	3	Partial Update	
AFSC	NPFMC	Gulf of Alaska Sculpin Complex	3	Partial Update	
AFSC	NPFMC	Rock sole - Gulf of Alaska	4	Partial Update	
AFSC	NPFMC	Gulf of Alaska Shark Complex	1	Partial Update	
AFSC	NPFMC	Gulf of Alaska Skate Complex	3	Partial Update	
AFSC	NPFMC	Big skate - Gulf of Alaska	3	Partial Update	Split from Alaska Skate Complex
AFSC	NPFMC	Gulf of Alaska Squid Complex	1	Partial Update	
AFSC	NPFMC	Kamchatka flounder - Bering Sea / Aleutian Islands	4	Full Update	
AFSC	NPFMC	Longnose skate - Gulf of Alaska	3	Partial Update	Split from Alaska Skate Complex
AFSC	NPFMC	Pacific cod - Aleutian Islands	3	Full Update	
AFSC	NPFMC	Red king crab - Western Aleutian Islands	1	Full Update	
AFSC	NPFMC	Shortraker rockfish - Bering Sea / Aleutian Islands	3	Full Update	
AFSC	NPFMC	Shortraker rockfish - Gulf of Alaska	3	Partial Update	
AFSC	NPFMC	Walleye pollock - Bogoslof	3	Full Update	
AFSC	NPFMC	Walleye pollock - Southeast Gulf of Alaska	3	Partial Update	
SEFSC	HMS	Albacore - North Atlantic	4	Benchmark	
SEFSC	HMS	Sailfish - Western Atlantic	4	Benchmark	
SEFSC	HMS	Yellowfin tuna - Atlantic	4	Benchmark	

National Marine Fisheries Service

Updated FY 2017 Quarter 4

Completed Assessments for Non-FSSI Stocks - FY 2017 Quarter 1 (October - December, 2016)

Science Center(s) ¹	Jurisdiction ²	Stock	Asmt Level ³	Asmt Type ⁴	Notes on Assessment
SEFSC	SAFMC / GMFMC	Goliath grouper - Southern Atlantic Coast / Gulf of Mexico	-1	Benchmark	Assessment was rejected due to model uncertainty

Completed Assessments for Non-FSSI Stocks - FY 2017 Quarter 2 (January - March, 2017)

Science Center(s) ¹	Jurisdiction ²	Stock	Asmt Level ³	Asmt Type ⁴	Notes on Assessment
NW/SW	PFMC	Pacific hake - Pacific Coast	4	Full Update	
NW/SW	PFMC	Chinook salmon - California Central Valley: Sacramento (spring)	1	Full Update	
NW/SW	PFMC	Chinook salmon - California Central Valley: Sacramento (winter)	4	Full Update	
NW/SW	PFMC	Chinook salmon - Columbia River Basin: Lower River Hatchery (fall)	4	Full Update	
NW/SW	PFMC	Chinook salmon - Columbia River Basin: Lower River Hatchery (spring)	4	Full Update	
NW/SW	PFMC	Chinook salmon - Columbia River Basin: Mid-River Bright Hatchery (fall)	4	Full Update	
NW/SW	PFMC	Chinook salmon - Columbia River Basin: North Lewis (fall)	4	Full Update	
NW/SW	PFMC	Chinook salmon - Columbia River Basin: Snake (fall)	4	Full Update	
NW/SW	PFMC	Chinook salmon - Columbia River Basin: Snake (spring/summer)	4	Full Update	
NW/SW	PFMC	Chinook salmon - Columbia River Basin: Spring Creek Hatchery (fall)	4	Full Update	
NW/SW	PFMC	Chinook salmon - Columbia River Basin: Upper River (spring)	4	Full Update	
NW/SW	PFMC	Chinook salmon - Columbia River Basin: Upper River (summer)	4	Full Update	
NW/SW	PFMC	Chinook salmon - Columbia River Basin: Upper River Bright (fall)	4	Full Update	
NW/SW	PFMC	Chinook salmon - Columbia River Basin: Upper Willamette (spring)	4	Full Update	
NW/SW	PFMC	Chinook salmon - Northern California Coast: Eel, Mattole, and Mad (fall/spring) (<i>California Coastal</i>)	1	Full Update	
NW/SW	PFMC	Chinook salmon - Northern California Coast: Klamath (spring)	4	Full Update	Stock was listed in error. No assessment conducted.
NW/SW	PFMC	Chinook salmon - Oregon Coast: Central and Northern	3	Full Update	
NW/SW	PFMC	Chinook salmon - Oregon Coast: Southern	3	Full Update	
NW/SW	PFMC	Chinook salmon - Puget Sound: Cedar (summer/fall)	4	Full Update	
NW/SW	PFMC	Chinook salmon - Puget Sound: Eastern Strait of Juan de Fuca (summer/fall)	4	Full Update	

National Marine Fisheries Service

Updated FY 2017 Quarter 4

Completed Assessments for Non-FSSI Stocks - FY 2017 Quarter 2 (January - March, 2017)

Science Center(s) ¹	Jurisdiction ²	Stock	Asmt Level ³	Asmt Type ⁴	Notes on Assessment
NW/SW	PFMC	Chinook salmon - Puget Sound: Green (summer/fall)	4	Full Update	
NW/SW	PFMC	Chinook salmon - Puget Sound: Mid Hood Canal (summer/fall)	1	Full Update	
NW/SW	PFMC	Chinook salmon - Puget Sound: Nisqually (summer/fall)	1	Full Update	
NW/SW	PFMC	Chinook salmon - Puget Sound: Nooksack (spring early)	4	Full Update	
NW/SW	PFMC	Chinook salmon - Puget Sound: Puyallup (summer/fall)	3	Full Update	
NW/SW	PFMC	Chinook salmon - Puget Sound: Skagit (spring)	3	Full Update	
NW/SW	PFMC	Chinook salmon - Puget Sound: Skagit (summer/fall)	5	Full Update	
NW/SW	PFMC	Chinook salmon - Puget Sound: Skokomish (summer/fall)	1	Full Update	
NW/SW	PFMC	Chinook salmon - Puget Sound: Snohomish (summer/fall)	5	Full Update	
NW/SW	PFMC	Chinook salmon - Puget Sound: Stillaguamish (summer/fall)	5	Full Update	
NW/SW	PFMC	Chinook salmon - Puget Sound: White River (spring)	3	Full Update	
NW/SW	PFMC	Chinook salmon - Washington Coast: Grays Harbor (fall)	1	Full Update	
NW/SW	PFMC	Chinook salmon - Washington Coast: Grays Harbor (spring)	1	Full Update	
NW/SW	PFMC	Chinook salmon - Washington Coast: Hoh (fall)	1	Full Update	
NW/SW	PFMC	Chinook salmon - Washington Coast: Hoh (spring/summer)	1	Full Update	
NW/SW	PFMC	Chinook salmon - Washington Coast: Hoko (summer/fall)	4	Full Update	
NW/SW	PFMC	Chinook salmon - Washington Coast: Queets (fall)	5	Full Update	
NW/SW	PFMC	Chinook salmon - Washington Coast: Queets (spring/summer)	2	Full Update	
NW/SW	PFMC	Chinook salmon - Washington Coast: Quillayute (fall)	2	Full Update	
NW/SW	PFMC	Chinook salmon - Washington Coast: Quillayute (spring/summer)	1	Full Update	
NW/SW	PFMC	Chinook salmon - Washington Coast: Quinalt Fall (hatchery)	4	Full Update	
NW/SW	PFMC	Chinook salmon - Washington Coast: Willapa Bay Fall (hatchery)	4	Full Update	
NW/SW	PFMC	Chinook salmon - Washington Coast: Willapa Bay Fall (natural)	4	Full Update	
NW/SW	PFMC	Coho salmon - Oregon Production Index Area: Central California Coast	1	Full Update	

National Marine Fisheries Service

Updated FY 2017 Quarter 4

Completed Assessments for Non-FSSI Stocks - FY 2017 Quarter 2 (January - March, 2017)

Science Center(s) ¹	Jurisdiction ²	Stock	Asmt Level ³	Asmt Type ⁴	Notes on Assessment
NW/SW	PFMC	Coho salmon - Oregon Production Index Area: Columbia (early hatchery)	4	Full Update	
NW/SW	PFMC	Coho salmon - Oregon Production Index Area: Columbia (late hatchery)	4	Full Update	
NW/SW	PFMC	Coho salmon - Oregon Production Index Area: Columbia (natural)	4	Full Update	
NW/SW	PFMC	Coho salmon - Oregon Production Index Area: Southern Oregon / Northern California Coast	1	Full Update	
NW/SW	PFMC	Coho salmon - Oregon Production Index Area: Oregon Coastal (hatchery)	1	Full Update	
NW/SW	PFMC	Coho salmon - Oregon Production Index Area: Oregon Coastal (natural)	5	Full Update	
NW/SW	PFMC	Coho salmon - Puget Sound: Hood Canal	4	Full Update	
NW/SW	PFMC	Coho salmon - Puget Sound: Skagit	5	Full Update	
NW/SW	PFMC	Coho salmon - Puget Sound: Snohomish	4	Full Update	
NW/SW	PFMC	Coho salmon - Puget Sound: South Puget Sound (hatchery)	4	Full Update	
NW/SW	PFMC	Coho salmon - Puget Sound: Stillaguamish	4	Full Update	
NW/SW	PFMC	Coho salmon - Washington Coast: Grays Harbor	5	Full Update	
NW/SW	PFMC	Coho salmon - Washington Coast: Hoh	5	Full Update	
NW/SW	PFMC	Coho salmon - Washington Coast: Queets	5	Full Update	
NW/SW	PFMC	Coho salmon - Washington Coast: Quillayute (fall)	4	Full Update	
NW/SW	PFMC	Coho salmon - Washington Coast: Quillayute (summer)	4	Full Update	
NW/SW	PFMC	Coho salmon - Washington Coast: Quinalt	1	Full Update	
NW/SW	PFMC	Coho salmon - Washington Coast: Strait of Juan de Fuca	5	Full Update	
NW/SW	PFMC	Coho salmon - Washington Coast: Willapa Bay	5	Full Update	
NW/SW	PFMC	Coho salmon - Washington Coast: Willapa Bay (natural)	5	Full Update	
NW/SW	PFMC	Pink salmon - Puget Sound (odd-numbered years)	1	Full Update	
PIFSC	WPFMC	<i>Parupeneus insularis</i> - Doublebar goatfish - Main Hawaiian Islands	2	New	
PIFSC	WPFMC	<i>Parupeneus porphyreus</i> : Whitesaddle goatfish - Main Hawaiian Islands	2	New	

National Marine Fisheries Service

Updated FY 2017 Quarter 4

Completed Assessments for Non-FSSI Stocks - FY 2017 Quarter 2 (January - March, 2017)

Science Center(s) ¹	Jurisdiction ²	Stock	Asmt Level ³	Asmt Type ⁴	Notes on Assessment
PIFSC	WPFMC	<i>Mulloidichthys vanicolensis</i> : Yellowfin goatfish - Main Hawaiian Islands	2	New	
PIFSC	WPFMC	<i>Mulloidichthys flavolineatus</i> - Yellowstripe goatfish	2	New	
PIFSC	WPFMC	<i>Cephalopholis argus</i> - Peacock hind - Main Hawaiian Islands	2	New	
PIFSC	WPFMC	<i>Caranx ignobilis</i> - Main Hawaiian Islands Jack	2	New	
PIFSC	WPFMC	<i>Caranx melampygus</i> - Main Hawaiian Islands Jack -	2	New	
PIFSC	WPFMC	<i>Chlorurus spilurus</i> -Bullethead parrotfish	2	New	
PIFSC	WPFMC	<i>Lutjanus fulvus</i> - Blacktail snapper	2	New	
PIFSC	WPFMC	<i>Scarus rubroviolaceus</i> - Redlip parrotfish - Main Hawaiian Islands	2	New	
PIFSC	WPFMC	<i>Scarus psittacus</i> - Palenose parrotfish	2	New	
PIFSC	WPFMC	<i>Acanthurus dussumieri</i> (Eyestripe surgeonfish)	2	New	
PIFSC	WPFMC	<i>Naso brevirostris</i>	2	New	
PIFSC	WPFMC	<i>Naso hexacanthus</i>	2	New	
PIFSC	WPFMC	<i>Naso lituratus</i>	2	New	
PIFSC	WPFMC	<i>Naso unicornis</i>	2	New	
PIFSC	WPFMC	<i>Mulloidichthys pflugeri</i> - Orange goatfish - Main Hawaiian Islands	2	New	
PIFSC	WPFMC	<i>Parupeneus cyclostomus</i> - Yellowsaddle goatfish - Main Hawaiian Islands	2	New	
PIFSC	WPFMC	<i>Monotaxis grandoculis</i> -Bigeye Emperor	2	New	
PIFSC	WPFMC	Bigscale soldierfish - Main Hawaiian Islands (<i>Myripristis berntdi</i>)	2	New	
PIFSC	WPFMC	<i>Acanthurus blochii</i>	2	New	
PIFSC	WPFMC	<i>Calotomus carolinus</i>	2	New	
PIFSC	WPFMC	<i>Chlorurus perspicillatus</i> - Main Hawaiian Islands	2	New	
PIFSC	WPFMC	<i>Scarus dubius</i> - Main Hawaiian Islands	2	New	
PIFSC	WPFMC	<i>Carangoides orthogrammus</i>	2	New	
PIFSC	WPFMC	<i>Aprion Virescens</i> - Green jobfish - Main Hawaiian Islands	2	New	
PIFSC	WPFMC	<i>Lutjanus kasmira</i> - Common bluestripe snapper - Main Hawaiian Islands	2	New	

National Marine Fisheries Service

Updated FY 2017 Quarter 4

Completed Assessments for Non-FSSI Stocks - FY 2017 Quarter 3 (April - June, 2017)

Science Center(s) ¹	Jurisdiction ²	Stock	Asmt Level ³	Asmt Type ⁴	Notes on Assessment
AFSC	NPFMC	Golden king crab - Pribilof Islands	1	Full Update	
AFSC	NPFMC	Weathervane scallop - Alaska	1	Full Update	
SEFSC	GMFMC	Almaco jack - Gulf of Mexico	1	New	Accepted - not used in management
SEFSC	GMFMC	Lane snapper - Gulf of Mexico	1	New	
SEFSC	GMFMC	Lesser amberjack - Gulf of Mexico	1	New	Accepted - not used in management
SEFSC	GMFMC	Red drum - Gulf of Mexico	NA	NA	Unable to assess
SEFSC	GMFMC	Snowy Grouper - Gulf of Mexico	NA	NA	Unable to assess
SEFSC	GMFMC	Speckled hind - Gulf of Mexico	1	New	Accepted - not used in management
SEFSC	GMFMC	Wenchman - Gulf of Mexico	NA	NA	Unable to assess
SEFSC	GMFMC	Yellowmouth grouper - Gulf of Mexico	NA	NA	Unable to assess

Completed Assessments for Non-FSSI Stocks - FY 2017 Quarter 4 (July - September, 2017)

Science Center(s) ¹	Jurisdiction ²	Stock	Asmt Level ³	Asmt Type ⁴	Notes on Assessment
NEFSC	NEFMC	Atlantic salmon - Gulf of Maine	4	Full Update	
NW/SW	PFMC	Yellowtail rockfish - Southern Pacific Coast	-4	Benchmark	Assessment not accepted for management
SW/PI	PFMC / WPFMC	Bigeye tuna - Eastern Pacific	4	Full Update	
SW/PI	PFMC / WPFMC	Skipjack tuna - Eastern Pacific	1	Full Update	
SW/PI	PFMC / WPFMC	Yellowfin tuna - Eastern Pacific	4	Full Update	
SW/PI	PFMC / WPFMC	Albacore - North Pacific	4	Benchmark	
SW/PI	PFMC / WPFMC	Blue shark - North Pacific	4	Benchmark	

Footnotes

¹ NOAA Fisheries Science Centers include Alaska Fisheries Science Center (AFSC), Northeast Fisheries Science Center (NEFSC), Northwest Fisheries Science Center (NWFSC), Pacific Islands Fisheries Science Center (PIFSC), Southeast Fisheries Science Center (SEFSC) and Southwest Fisheries Science Center (SWFSC). In some cases, assessments are conducted by multiple science centers (e.g. NW/SW and SW/PI).

² Jurisdictions include Caribbean Fishery Management Council (CFMC), Gulf of Mexico Fishery Management Council (GMFMC), Atlantic Highly Migratory Species Division (HMS), Mid-Atlantic Fishery Management Council (MAFMC), New England Fishery Management Council (NEFMC), North Pacific Fishery Management Council (NPFMC), Pacific Fishery Management Council (PFMC), South Atlantic Fishery Management Council (SAFMC) and Western Pacific Fishery Management Council (WPFMC).

³ Level of complexity of assessment methods used for the particular stock. Generally reflects the availability of data and the value or importance of the fishery. Levels are described in the Stock Assessment Improvement Plan (<http://www.st.nmfs.noaa.gov/StockAssessment/index.html>). A negative level indicates that an assessment was attempted at that level of complexity, but the effort was not accepted in its technical review.

⁴ Data Updates are not counted as stock assessments.

* Changes in the assessment schedule are indicated by red, bold font.

Appendix C. Planned assessments for FSSI and non-FSSI stocks for FY 2018. Information is best available provided by NOAA Fisheries Science Centers and subject to change.

Planned Assessments for FSSI and Non-FSSI Stocks - FY 2018 Quarter 1 (October - December, 2017)

Science Center(s) ¹	Jurisdiction ²	FSSI / Non-FSSI ³	Stock	Planned Asmt Level ⁴	Planned Asmt Type ⁵	Notes
AFSC	NPFMC	Non - FSSI	Coho salmon - Auke Creek	4	Full Update	
AFSC	NPFMC	Non - FSSI	Coho salmon - Berners River	4	Full Update	
AFSC	NPFMC	Non - FSSI	Coho salmon - Hugh Smith Lake	4	Full Update	
AFSC	NPFMC	Non - FSSI	Chinook salmon - Eastern North Pacific Far North Migrating	4	Full Update	
AFSC	NPFMC	FSSI	Alaska plaice - Bering Sea / Aleutian Islands	4	Full Update	
AFSC	NPFMC	Non - FSSI	Alaska skate - Bering Sea / Aleutian Islands	4	Partial Update	
AFSC	NPFMC	FSSI	Arrowtooth flounder - Bering Sea / Aleutian Islands	5	Partial Update	
AFSC	NPFMC	FSSI	Arrowtooth flounder - Gulf of Alaska	4	Full Update	
AFSC	NPFMC	FSSI	Atka mackerel - Bering Sea / Aleutian Islands	4	Full Update	
AFSC	NPFMC	Non - FSSI	Atka mackerel - Gulf of Alaska	1	Full Update	
AFSC	NPFMC	FSSI	Bering Sea / Aleutian Islands Blackspotted and Rougheye Rockfish Complex	4	Partial Update	
AFSC	NPFMC	FSSI	Flathead sole - Bering Sea / Aleutian Islands	5	Full Update	
AFSC	NPFMC	FSSI	Northern rock sole - Bering Sea / Aleutian Islands	4	Partial Update	
AFSC	NPFMC	Non - FSSI	Bering Sea / Aleutian Islands Sculpin Complex	3	Partial Update	
AFSC	NPFMC	FSSI	Alaska skate - Bering Sea / Aleutian Islands	4	Partial Update	
AFSC	NPFMC	FSSI	Blue king crab - Pribilof Islands	1	Full Update	
AFSC	NPFMC	FSSI	Blue king crab - Saint Matthew Island	4	Full Update	
AFSC	NPFMC	Non - FSSI	Dusky rockfish - Gulf of Alaska	4	Partial Update	
AFSC	NPFMC	FSSI	Flathead sole - Gulf of Alaska	4	Full Update	
AFSC	NPFMC	FSSI	Greenland halibut - Bering Sea / Aleutian Islands	4	Partial Update	
AFSC	NPFMC	FSSI	Gulf of Alaska Blackspotted and Rougheye Rockfish Complex	4	Full Update	
AFSC	NPFMC	FSSI	Dover sole - Gulf of Alaska	4	Partial Update	
AFSC	NPFMC	Non - FSSI	Giant octopus - Gulf of Alaska	1	Full Update	
AFSC	NPFMC	Non - FSSI	Gulf of Alaska Other Rockfish Complex	3	Partial Update	

National Marine Fisheries Service

Updated FY 2017 Quarter 4

Planned Assessments for FSSI and Non-FSSI Stocks - FY 2018 Quarter 1 (October - December, 2017)

Science Center(s) ¹	Jurisdiction ²	FSSI / Non-FSSI ³	Stock	Planned Asmt Level ⁴	Partial Update	Notes
AFSC	NPFMC	Non - FSSI	Gulf of Alaska Sculpin Complex	3	Full Update	
AFSC	NPFMC	FSSI	Northern rock sole - Gulf of Alaska	4	Full Update	
AFSC	NPFMC	Non - FSSI	Gulf of Alaska Skate Complex	3	Full Update	
AFSC	NPFMC	Non - FSSI	Gulf of Alaska Squid Complex	1	Full Update	
AFSC	NPFMC	Non - FSSI	Kamchatka flounder - Bering Sea / Aleutian Islands	4	Full Update	
AFSC	NPFMC	FSSI	Northern rockfish - Bering Sea / Aleutian Islands	4	Partial Update	
AFSC	NPFMC	FSSI	Northern rockfish - Western / Central Gulf of Alaska	4	Partial Update	
AFSC	NPFMC	Non - FSSI	Pacific cod - Aleutian Islands	3	Full Update	
AFSC	NPFMC	FSSI	Pacific cod - Bering Sea	4	Full Update	
AFSC	NPFMC	FSSI	Pacific cod - Gulf of Alaska	4	Full Update	
AFSC	NPFMC	FSSI	Pacific ocean perch - Bering Sea / Aleutian Islands	4	Partial Update	
AFSC	NPFMC	FSSI	Pacific ocean perch - Gulf of Alaska	4	Full Update	
AFSC	NPFMC	FSSI	Red king crab - Bristol Bay	4	Full Update	
AFSC	NPFMC	FSSI	Red king crab - Pribilof Islands	1	Full Update	
AFSC	NPFMC	FSSI	Rex sole - Gulf of Alaska	4	Full Update	
AFSC	NPFMC	FSSI	Sablefish - Eastern Bering Sea / Aleutian Islands / Gulf of Alaska	5	Full Update	
AFSC	NPFMC	Non - FSSI	Shortraker rockfish - Gulf of Alaska	3	Full Update	
AFSC	NPFMC	FSSI	Snow crab - Bering Sea	4	Full Update	
AFSC	NPFMC	FSSI	Southern Tanner crab - Bering Sea	4	Full Update	
AFSC	NPFMC	FSSI	Walleye pollock - Aleutian Islands	4	Partial Update	
AFSC	NPFMC	FSSI	Walleye pollock - Eastern Bering Sea	4	Full Update	
AFSC	NPFMC	Non - FSSI	Walleye pollock -Southeast Gulf of Alaska	3	Full Update	
AFSC	NPFMC	FSSI	Walleye pollock - Western / Central Gulf of Alaska	4	Full Update	
AFSC	NPFMC	FSSI	Yellowfin sole - Bering Sea / Aleutian Islands	5	Full Update	
NEFSC	NEFMC	FSSI	Acadian redfish - Gulf of Maine / Georges Bank	4	Full Update	
NEFSC	NEFMC	FSSI	American plaice - Gulf of Maine / Georges Bank	4	Full Update	
NEFSC	NEFMC	FSSI	Atlantic cod - Georges Bank	4	Full Update	
NEFSC	NEFMC	FSSI	Atlantic cod - Gulf of Maine	4	Full Update	
NEFSC	NEFMC	FSSI	Atlantic halibut - Northwestern Atlantic Coast	3	Full Update	
NEFSC	NEFMC	FSSI	Atlantic wolffish - Gulf of Maine / Georges Bank	4	Full Update	

National Marine Fisheries Service

Updated FY 2017 Quarter 4

Planned Assessments for FSSI and Non-FSSI Stocks - FY 2018 Quarter 1 (October - December, 2017)

Science Center(s) ¹	Jurisdiction ²	FSSI / Non-FSSI ³	Stock	Planned Asmt Level ⁴	Planned Asmt Type ⁵	Notes
NEFSC	NEFMC	FSSI	Haddock - Georges Bank	4	Full Update	
NEFSC	NEFMC	FSSI	Haddock - Gulf of Maine	4	Full Update	
NEFSC	NEFMC	FSSI	Ocean pout - Northwestern Atlantic Coast	1	Full Update	
NEFSC	NEFMC	FSSI	Pollock - Gulf of Maine / Georges Bank	4	Full Update	
NEFSC	NEFMC	FSSI	White hake - Gulf of Maine / Georges Bank	4	Full Update	
NEFSC	NEFMC	FSSI	Windowpane - Gulf of Maine / Georges Bank	1	Full Update	
NEFSC	NEFMC	FSSI	Windowpane - Southern New England / Mid-Atlantic	1	Full Update	
NEFSC	NEFMC	FSSI	Winter flounder - Georges Bank	4	Full Update	
NEFSC	NEFMC	FSSI	Winter flounder - Gulf of Maine	1	Full Update	
NEFSC	NEFMC	FSSI	Winter flounder - Southern New England / Mid-Atlantic	4	Full Update	
NEFSC	NEFMC	FSSI	Witch flounder - Northwestern Atlantic Coast	1	Full Update	
NEFSC	NEFMC	FSSI	Yellowtail flounder - Cape Cod / Gulf of Maine	4	Full Update	
NEFSC	NEFMC	FSSI	Yellowtail flounder - Southern New England / Mid-Atlantic	4	Full Update	
NW / SW	PFMC	FSSI	Cabazon - Washington	1	New	
NW / SW	PFMC	FSSI	Pacific ocean perch - Pacific Coast	4	Benchmark	
NW / SW	PFMC	FSSI	Starry flounder - Northern Pacific Coast	1	New	
NW / SW	PFMC	FSSI	Starry flounder - Southern Pacific Coast	1	New	
PIFSC	HMS	Non - FSSI	Bigeye tuna - Eastern Pacific Ocean	4	Full Update	
PIFSC	HMS	Non - FSSI	Bigeye tuna - Western and Central Pacific Ocean	4	Full Update	
SEFSC	GMFMC	FSSI	Brown shrimp - Gulf of Mexico	4	Full Update	
SEFSC	GMFMC	FSSI	Pink shrimp - Gulf of Mexico	4	Full Update	
SEFSC	GMFMC	FSSI	Royal red shrimp - Gulf of Mexico	1	Full Update	
SEFSC	GMFMC	FSSI	White shrimp - Gulf of Mexico	4	Full Update	
SEFSC	HMS	FSSI	Shortfin mako - North Atlantic	4	Benchmark	
SEFSC	SAFMC	FSSI	Blueline tilefish - Southern Atlantic Coast	4	Benchmark	
SEFSC	SAFMC	FSSI	Brown rock shrimp - Southern Atlantic Coast	1	Full Update	
SEFSC	SAFMC	FSSI	Brown shrimp - Southern Atlantic Coast	1	Full Update	
SEFSC	SAFMC	FSSI	Pink shrimp - Southern Atlantic Coast	1	Full Update	
SEFSC	SAFMC	FSSI	White shrimp - Southern Atlantic Coast	1	Full Update	

Planned Assessments for FSSI and Non-FSSI Stocks - FY 2018 Quarter 2 (January - March, 2018)

Science Center(s) ¹	Jurisdiction ²	FSSI / Non-FSSI ³	Stock	Planned Asmt Level ⁴	Planned Asmt Type ⁵	Notes
AFSC	IPHC	Non - Federal	Pacific halibut - Pacific Coast / Alaska	4	Full Update	

National Marine Fisheries Service

Updated FY 2017 Quarter 4

Planned Assessments for FSSI and Non-FSSI Stocks - FY 2018 Quarter 2 (January - March, 2018)						
Science Center(s) ¹	Jurisdiction ²	FSSI / Non-FSSI ³	Stock	Planned Asmt Level ⁴	Planned Asmt Type ⁵	Notes
AFSC	NPFMC	FSSI	Red king crab - Norton Sound	4	Full Update	
NEFMC	MAFMC	FSSI	Atlantic mackerel - Gulf of Maine / Cape Hatteras	4	Benchmark	
NW/SW	PFMC	Non - FSSI	Pacific hake - Pacific Coast	4	Benchmark	
NW/SW	PFMC	FSSI	Chinook salmon - California Central Valley: Sacramento (fall)	3	Full Update	
NW/SW	PFMC	Non - FSSI	Chinook salmon - California Central Valley: Sacramento (spring)	1	Full Update	
NW/SW	PFMC	Non - FSSI	Chinook salmon - California Central Valley: Sacramento (winter)	4	Full Update	
NW/SW	PFMC	Non - FSSI	Chinook salmon - Columbia River Basin: Lower River Hatchery (fall)	4	Full Update	
NW/SW	PFMC	Non - FSSI	Chinook salmon - Columbia River Basin: Lower River Hatchery (spring)	4	Full Update	
NW/SW	PFMC	Non - FSSI	Chinook salmon - Columbia River Basin: Mid-River Bright Hatchery (fall)	4	Full Update	
NW/SW	PFMC	Non - FSSI	Chinook salmon - Columbia River Basin: North Lewis (fall)	4	Full Update	
NW/SW	PFMC	Non - FSSI	Chinook salmon - Columbia River Basin: Snake (fall)	4	Full Update	
NW/SW	PFMC	Non - FSSI	Chinook salmon - Columbia River Basin: Snake (spring/summer)	4	Full Update	
NW/SW	PFMC	Non - FSSI	Chinook salmon - Columbia River Basin: Spring Creek Hatchery (fall)	4	Full Update	
NW/SW	PFMC	Non - FSSI	Chinook salmon - Columbia River Basin: Upper River (spring)	4	Full Update	
NW/SW	PFMC	Non - FSSI	Chinook salmon - Columbia River Basin: Upper River (summer)	4	Full Update	
NW/SW	PFMC	Non - FSSI	Chinook salmon - Columbia River Basin: Upper River Bright (fall)	4	Full Update	
NW/SW	PFMC	Non - FSSI	Chinook salmon - Columbia River Basin: Upper Willamette (spring)	4	Full Update	
NW/SW	PFMC	Non - FSSI	Chinook salmon - Northern California Coast: Eel, Mattole, and Mad (fall/spring) (California Coastal)	4	Full Update	
NW/SW	PFMC	FSSI	Chinook salmon - Northern California Coast: Klamath (fall)	4	Full Update	
NW/SW	PFMC	Non - FSSI	Chinook salmon - Oregon Coast: Central and Northern	3	Full Update	
NW/SW	PFMC	Non - FSSI	Chinook salmon - Oregon Coast: Southern	3	Full Update	
NW/SW	PFMC	Non - FSSI	Chinook salmon - Puget Sound: Cedar (summer/fall)	4	Full Update	
NW/SW	PFMC	Non - FSSI	Chinook salmon - Puget Sound: Eastern Strait of Juan de Fuca (summer/fall)	4	Full Update	
NW/SW	PFMC	Non - FSSI	Chinook salmon - Puget Sound: Green (summer/fall)	4	Full Update	
NW/SW	PFMC	Non - FSSI	Chinook salmon - Puget Sound: Mid Hood Canal (summer/fall)	1	Full Update	

National Marine Fisheries Service

Updated FY 2017 Quarter 4

Planned Assessments for FSSI and Non-FSSI Stocks - FY 2018 Quarter 2 (January - March, 2018)

Science Center(s) ¹	Jurisdiction ²	FSSI / Non-FSSI ³	Stock	Planned Asmt Level ⁴	Planned Asmt Type ⁵	Notes
NW/SW	PPMC	Non - FSSI	Chinook salmon - Puget Sound: Nisqually (summer/fall)	1	Full Update	
NW/SW	PPMC	Non - FSSI	Chinook salmon - Puget Sound: Nooksack (spring early)	4	Full Update	
NW/SW	PPMC	Non - FSSI	Chinook salmon - Puget Sound: Puyallup (summer/fall)	3	Full Update	
NW/SW	PPMC	Non - FSSI	Chinook salmon - Puget Sound: Skagit (spring)	3	Full Update	
NW/SW	PPMC	Non - FSSI	Chinook salmon - Puget Sound: Skagit (summer/fall)	5	Full Update	
NW/SW	PPMC	Non - FSSI	Chinook salmon - Puget Sound: Skokomish (summer/fall)	1	Full Update	
NW/SW	PPMC	Non - FSSI	Chinook salmon - Puget Sound: Snohomish (summer/fall)	5	Full Update	
NW/SW	PPMC	Non - FSSI	Chinook salmon - Puget Sound: Stillaguamish (summer/fall)	5	Full Update	
NW/SW	PPMC	Non - FSSI	Chinook salmon - Puget Sound: White River (spring)	3	Full Update	
NW/SW	PPMC	Non - FSSI	Chinook salmon - Washington Coast: Grays Harbor (fall)	1	Full Update	
NW/SW	PPMC	Non - FSSI	Chinook salmon - Washington Coast: Grays Harbor (spring)	1	Full Update	
NW/SW	PPMC	Non - FSSI	Chinook salmon - Washington Coast: Hoh (fall)	1	Full Update	
NW/SW	PPMC	Non - FSSI	Chinook salmon - Washington Coast: Hoh (spring/summer)	1	Full Update	
NW/SW	PPMC	Non - FSSI	Chinook salmon - Washington Coast: Hoko (summer/fall)	4	Full Update	
NW/SW	PPMC	Non - FSSI	Chinook salmon - Washington Coast: Queets (fall)	5	Full Update	
NW/SW	PPMC	Non - FSSI	Chinook salmon - Washington Coast: Queets (spring/summer)	2	Full Update	
NW/SW	PPMC	Non - FSSI	Chinook salmon - Washington Coast: Quillayute (fall)	2	Full Update	
NW/SW	PPMC	Non - FSSI	Chinook salmon - Washington Coast: Quillayute (spring/summer)	1	Full Update	
NW/SW	PPMC	Non - FSSI	Chinook salmon - Washington Coast: Quinault Fall (hatchery)	4	Full Update	
NW/SW	PPMC	Non - FSSI	Chinook salmon - Washington Coast: Willapa Bay Fall (hatchery)	4	Full Update	
NW/SW	PPMC	Non - FSSI	Chinook salmon - Washington Coast: Willapa Bay Fall (natural)	4	Full Update	
NW/SW	PPMC	Non - FSSI	Coho salmon - Oregon Production Index Area: Central California Coast	1	Full Update	
NW/SW	PPMC	Non - FSSI	Coho salmon - Oregon Production Index Area: Columbia (early hatchery)	4	Full Update	
NW/SW	PPMC	Non - FSSI	Coho salmon - Oregon Production Index Area: Columbia (late hatchery)	4	Full Update	
NW/SW	PPMC	Non - FSSI	Coho salmon - Oregon Production Index Area: Columbia (natural)	4	Full Update	

National Marine Fisheries Service
Updated FY 2017 Quarter 4

Planned Assessments for FSSI and Non-FSSI Stocks - FY 2018 Quarter 2 (January - March, 2018)						
Science Center(s) ¹	Jurisdiction ²	FSSI / Non-FSSI ³	Stock	Planned Asmt Level ⁴	Planned Asmt Type ⁵	Notes
NW/SW	PFMC	Non - FSSI	Coho salmon - Oregon Production Index Area: Northern California	1	Full Update	
NW/SW	PFMC	Non - FSSI	Coho salmon - Oregon Production Index Area: Oregon Coastal (hatchery)	1	Full Update	
NW/SW	PFMC	Non - FSSI	Coho salmon - Oregon Production Index Area: Oregon Coastal (natural)	5	Full Update	
NW/SW	PFMC	Non - FSSI	Coho salmon - Puget Sound: Hood Canal	4	Full Update	
NW/SW	PFMC	Non - FSSI	Coho salmon - Puget Sound: Skagit	5	Full Update	
NW/SW	PFMC	Non - FSSI	Coho salmon - Puget Sound: Snohomish	4	Full Update	
NW/SW	PFMC	Non - FSSI	Coho salmon - Puget Sound: South Puget Sound (hatchery)	4	Full Update	
NW/SW	PFMC	Non - FSSI	Coho salmon - Puget Sound: Stillaguamish	4	Full Update	
NW/SW	PFMC	Non - FSSI	Coho salmon - Washington Coast: Grays Harbor	5	Full Update	
NW/SW	PFMC	Non - FSSI	Coho salmon - Washington Coast: Hoh	5	Full Update	
NW/SW	PFMC	Non - FSSI	Coho salmon - Washington Coast: Queets	5	Full Update	
NW/SW	PFMC	Non - FSSI	Coho salmon - Washington Coast: Quillayute (fall)	4	Full Update	
NW/SW	PFMC	Non - FSSI	Coho salmon - Washington Coast: Quillayute (summer)	4	Full Update	
NW/SW	PFMC	Non - FSSI	Coho salmon - Washington Coast: Quinault	1	Full Update	
NW/SW	PFMC	Non - FSSI	Coho salmon - Washington Coast: Strait of Juan de Fuca	5	Full Update	
NW/SW	PFMC	Non - FSSI	Coho salmon - Washington Coast: Willapa Bay	5	Full Update	
NW/SW	PFMC	Non - FSSI	Coho salmon - Washington Coast: Willapa Bay (natural)	5	Full Update	
PIFSC	WPFMC	FSSI	Main Hawaiian Islands Deep 7 Bottomfish Multi-species Complex	3	Benchmark	
PIFSC	WPFMC	Non - FSSI	Spanner crab - Main Hawaiian Islands	3	Benchmark	
SEFSC	GMFMC	FSSI	Red snapper - Gulf of Mexico	4	Standard	
SEFSC	HMS	FSSI	Sandbar shark - Atlantic and Gulf of Mexico	4	Standard	
SEFSC	SAFMC / GMFMC	FSSI	Black grouper - Southern Atlantic Coast / Gulf of Mexico.	4	Benchmark	
SW/PI	PFMC / WPFMC	Non - FSSI	Thresher shark - North Pacific	2	New	
Planned Assessments for FSSI and Non-FSSI Stocks - FY 2018 Quarter 3 (April - June, 2018)						
Science Center(s) ¹	Jurisdiction ²	FSSI / Non-FSSI ³	Stock	Planned Asmt Level ⁴	Planned Asmt Type ⁵	Notes
AFSC	NPFMC	FSSI	Golden king crab - Eastern Aleutian Islands	4	Full Update	

National Marine Fisheries Service

Updated FY 2017 Quarter 4

Planned Assessments for FSSI and Non-FSSI Stocks - FY 2018 Quarter 3 (April - June, 2018)

Science Center(s) ¹	Jurisdiction ²	FSSI / Non-FSSI ³	Stock	Planned Asmt Level ⁴	Planned Asmt Type ⁵	Notes
AFSC	NPFMC	FSSI	Golden king crab - Western Aleutian Islands	4	Full Update	
AFSC	NPFMC	Non - FSSI	Weathervane scallop - Alaska	1	Full Update	
PIFSC	WPFMC	Non - FSSI	Guam Coral Reef Ecosystem Multi-species Complex	2	New	Up to 20 individual stocks will be assessed within the complex
SEFSC	GMFMC	Non - FSSI	Gray snapper - Gulf of Mexico	4	New	
SEFSC	SAFMC	FSSI	Black sea bass - Southern Atlantic Coast	4	Full Update	
SEFSC	SAFMC	FSSI	Hogfish - Southeast Florida	4	Full Update	
SEFSC	SAFMC	FSSI	Vermilion snapper - Southern Atlantic Coast	4	Full Update	
SWFSC	PFMC	FSSI	Pacific sardine - Pacific Coast	4	Full Update	

Planned Assessments for FSSI and Non-FSSI Stocks - FY 2018 Quarter 4 (July - September, 2018)

Science Center(s) ¹	Jurisdiction ²	FSSI / Non-FSSI ³	Stock	Planned Asmt Level ⁴	Planned Asmt Type ⁵	Notes
AFSC	NPFMC	Non - FSSI	Coho salmon - Auke Creek	4	Full Update	
AFSC	NPFMC	Non - FSSI	Coho salmon - Berners River	4	Full Update	
AFSC	NPFMC	Non - FSSI	Coho salmon - Hugh Smith Lake	4	Full Update	
AFSC	NPFMC	Non - FSSI	Chinook salmon - Eastern North Pacific Far North Migrating	4	Full Update	
NEFSC	MAFMC	FSSI	Atlantic surfclam - Mid-Atlantic Coast	NA	Data Update	
NEFSC	MAFMC	FSSI	Black sea bass - Mid-Atlantic Coast	NA	Data Update	
NEFSC	MAFMC	FSSI	Bluefish - Atlantic Coast	NA	Data Update	
NEFSC	MAFMC	FSSI	Butterfish - Gulf of Maine / Cape Hatteras	NA	Data Update	
NEFSC	MAFMC	FSSI	Longfin inshore squid - Georges Bank / Cape Hatteras	NA	Data Update	
NEFSC	MAFMC	FSSI	Northern shortfin squid - Northwestern Atlantic Coast	NA	Data Update	
NEFSC	MAFMC	FSSI	Ocean quahog - Atlantic Coast	NA	Data Update	
NEFSC	MAFMC	FSSI	Scup - Atlantic Coast	NA	Data Update	
NEFSC	NEFMC	FSSI	Atlantic herring - Northwestern Atlantic Coast	5	Benchmark	
NEFSC	NEFMC	FSSI	Sea scallop - Northwestern Atlantic Coast	4	Benchmark	
NEFSC	NEFMC / MAFMC	FSSI	Spiny dogfish - Atlantic Coast	NA	Data Update	
PIFSC	WPFMC	Non - FSSI	Silky shark - Pacific	4	New	
SEFSC	HMS	FSSI	Blacktip shark - Gulf of Mexico	4	Full Update	

National Marine Fisheries Service

Updated FY 2017 Quarter 4

Planned Assessments for FSSI and Non-FSSI Stocks - FY 2018 Quarter 4 (July - September, 2018)

Science Center(s) ¹	Jurisdiction ²	FSSI / Non-FSSI ³	Stock	Planned Asmt Level ⁴	Planned Asmt Type ⁵	Notes
SW/PI	PFMC / WPFMC	Non - FSSI	Pacific bluefin tuna - Pacific	4	Benchmark	
SW/PI	PFMC / WPFMC	Non - FSSI	Shortfin mako - North Pacific	4	Benchmark	
SW/PI	PFMC / WPFMC	Non - FSSI	Swordfish - Eastern Pacific	4	Benchmark	
SW/PI	PFMC / WPFMC	Non - FSSI	Swordfish - Western and Central Pacific	4	Benchmark	
SW/PI	PFMC / WPFMC	Non - FSSI	Yellowfin tuna - Eastern Pacific	4	Full Update	

Footnotes

¹ NOAA Fisheries Science Centers include Alaska Fisheries Science Center (AFSC), Northeast Fisheries Science Center (NEFSC), Northwest Fisheries Science Center (NWFSC), Pacific Islands Fisheries Science Center (PIFSC), Southeast Fisheries Science Center (SEFSC) and Southwest Fisheries Science Center (SWFSC). In some cases, assessments are conducted by multiple science centers (e.g. NW/SW and SW/PI).

² Jurisdictions include Caribbean Fishery Management Council (CFMC), Gulf of Mexico Fishery Management Council (GMFMC), Atlantic Highly Migratory Species Division (HMS), Mid-Atlantic Fishery Management Council (MAFMC), New England Fishery Management Council (NEFMC), North Pacific Fishery Management Council (NPFMC), Pacific Fishery Management Council (PFMC), South Atlantic Fishery Management Council (SAFMC) and Western Pacific Fishery Management Council (WPFMC).

³ FSSI refers to federally managed stocks and stock complexes included on the Fish Stock Sustainability Index. Non-FSSI refers to federally managed stocks and stock complexes not included on the Fish Stock Sustainability Index. INT refers to international stocks.

⁴ Level of complexity of assessment methods used for the particular stock. Generally reflects the availability of data and the value or importance of the fishery. Levels are described in the Stock Assessment Improvement Plan (<http://www.st.nmfs.noaa.gov/StockAssessment/index.html>). A negative level indicates that an assessment was attempted at that level of complexity, but the effort was not accepted in its technical review.

⁵ Data Updates are not counted as stock assessments.

* Changes in the assessment schedule are indicated by red, bold font.

Appendix D. Assessment status for FSSI stocks and stock complexes at the end of Q4 FY 2017. Changes in assessment information relative to the previous fish assessment quarterly report are highlighted with red text. For more information, please see the Species Information System Public Portal at www.st.nmfs.noaa.gov/sisPortal/.

Science Center(s) ¹	Jurisdiction ²	Stock	Last Assessment				Assessment Notes
			Fiscal Year	Level ³	Type	Adequate?	
AFSC	NPFMC	Alaska plaice - Bering Sea / Aleutian Islands	2017	4	Full Update	Yes	
AFSC	NPFMC	Arrowtooth flounder - Bering Sea / Aleutian Islands	2017	5	Full Update	Yes	
AFSC	NPFMC	Arrowtooth flounder - Gulf of Alaska	2017	4	Partial Update	Yes	
AFSC	NPFMC	Atka mackerel - Bering Sea / Aleutian Islands	2017	4	Benchmark	Yes	
AFSC	NPFMC	Bering Sea / Aleutian Islands Blackspotted and Rougheye Rockfish Complex	2017	4	Benchmark	Yes	
AFSC	NPFMC	Bering Sea / Aleutian Islands Flathead Sole Complex	2017	5	Full Update	Yes	The assessment is for the Flathead Sole Complex indicator stock, flathead sole.
AFSC	NPFMC	Bering Sea / Aleutian Islands Rock Sole Complex	2017	4	Full Update	Yes	The assessment listed is for the Rock Sole Complex indicator stock, Northern rock sole.
AFSC	NPFMC	Bering Sea / Aleutian Islands Skate Complex	2017	4	Full Update	Yes	The assessment is for the Bering Sea / Aleutian Islands Skate Complex indicator stock, Alaska skate.
AFSC	NPFMC	Blue king crab - Pribilof Islands	2017	1	Full Update	No	
AFSC	NPFMC	Blue king crab - Saint Matthew Island	2017	4	Full Update	Yes	
AFSC	NPFMC	Dusky rockfish - Gulf of Alaska	2017	4	Partial Update	Yes	
AFSC	NPFMC	Flathead sole - Gulf of Alaska	2017	4	Partial Update	Yes	
AFSC	NPFMC	Golden king crab - Aleutian Islands	2017	4	Benchmark	Yes	
AFSC	NPFMC	Greenland halibut - Bering Sea / Aleutian Islands	2017	4	Benchmark	Yes	
AFSC	NPFMC	Gulf of Alaska Blackspotted and Rougheye Rockfish Complex	2017	4	Partial Update	Yes	
AFSC	NPFMC	Gulf of Alaska Deepwater Flatfish Complex	2017	4	Partial Update	Yes	The assessment is for Deepwater Flatfish Complex indicator stock, Dover sole.

National Marine Fisheries Service

Updated FY 2017 Quarter 4

Science Center(s) ¹	Jurisdiction ²	Stock	Last Assessment				Assessment Notes
			Fiscal Year	Level ³	Type	Adequate?	
AFSC	NPFMC	Gulf of Alaska Demersal Shelf Rockfish Complex	2017	3	Partial Update	Yes	The assessment is for Demersal Shelf Rockfish Complex indicator stock, yelloweye rockfish.
AFSC	NPFMC	Gulf of Alaska Shallow Water Flatfish Complex	2017	4	Partial Update	Yes	The assessment is for Gulf of Alaska Shallow Water Flatfish Complex indicator stocks, rock sole and Northern rock sole.
AFSC	NPFMC	Gulf of Alaska Thornyhead Rockfish Complex	2017	3	Partial Update	Yes	The assessment is for the Thornyhead Rockfish Complex indicator stock, shortspine thornyhead.
AFSC	NPFMC	Northern rockfish - Bering Sea / Aleutian Islands	2017	4	Benchmark	Yes	
AFSC	NPFMC	Northern rockfish - Western / Central Gulf of Alaska	2017	4	Partial Update	Yes	
AFSC	NPFMC	Pacific cod - Bering Sea / Aleutian Islands	2017	4	Benchmark	Yes	
AFSC	NPFMC	Pacific cod - Gulf of Alaska	2017	4	Benchmark	Yes	
AFSC	NPFMC	Pacific ocean perch - Bering Sea / Aleutian Islands	2017	4	Benchmark	Yes	
AFSC	NPFMC	Pacific ocean perch - Gulf of Alaska	2017	4	Partial Update	Yes	
AFSC	NPFMC	Red king crab - Bristol Bay	2017	4	Full Update	Yes	
AFSC	NPFMC	Red king crab - Norton Sound	2017	4	Full Update	Yes	
AFSC	NPFMC	Red king crab - Pribilof Islands	2017	1	Full Update	No	
AFSC	NPFMC	Rex sole - Gulf of Alaska	2017	4	Partial Update	Yes	
AFSC	NPFMC	Sablefish - Eastern Bering Sea / Aleutian Islands / Gulf of Alaska	2017	5	Benchmark	Yes	CIE Reviewed
AFSC	NPFMC	Snow crab - Bering Sea	2017	4	Full Update	Yes	
AFSC	NPFMC	Southern Tanner crab - Bering Sea	2017	4	Full Update	Yes	
AFSC	NPFMC	Walleye pollock - Aleutian Islands	2017	4	Full Update	Yes	
AFSC	NPFMC	Walleye pollock - Eastern Bering Sea	2017	4	Benchmark	Yes	
AFSC	NPFMC	Walleye pollock - Western / Central / West Yakutat Gulf of Alaska	2017	4	Benchmark	Yes	
AFSC	NPFMC	Yellowfin sole - Bering Sea / Aleutian Islands	2017	5	Full Update	Yes	

National Marine Fisheries Service
Updated FY 2017 Quarter 4

Science Center(s) ¹	Jurisdiction ²	Stock	Last Assessment				Assessment Notes
			Fiscal Year	Level ³	Type	Adequate?	
NEFSC	MAFMC	Atlantic mackerel - Gulf of Maine / Cape Hatteras	2010	(-4)	Full Update	No	
			2016	NA	Data Update		
NEFSC	MAFMC	Atlantic surfclam - Mid-Atlantic Coast	2017	4	Benchmark	Yes	
			2017	NA	Data Update		
NEFSC	MAFMC	Black sea bass - Mid-Atlantic Coast	2017	4	Benchmark	Yes	
			2016	NA	Data Update		
NEFSC	MAFMC	Bluefish - Atlantic Coast	2015	4	Benchmark	Yes	
			2017	NA	Data Update		
NEFSC	MAFMC	Butterfish - Gulf of Maine / Cape Hatteras	2017	5	Full Update	Yes	
			2016	NA	Data Update		
NEFSC	MAFMC	Longfin inshore squid - Georges Bank / Cape Hatteras	2017	1	Full Update	No	
			2016	NA	Data Update		
NEFSC	MAFMC	Northern shortfin squid - Northwestern Atlantic Coast	2005	2	Benchmark	No	
			2017	NA	Data Update		
NEFSC	MAFMC	Ocean quahog - Atlantic Coast	2017	4	Benchmark	Yes	
			2016	NA	Data Update		
NEFSC	MAFMC	Scup - Atlantic Coast	2017	4	Partial Update	Yes	
			2016	NA	Data Update		
NEFSC	MAFMC	Summer flounder - Mid-Atlantic Coast	2016	4	Full Update	Yes	
			2017	NA	Data Update		
NEFSC	MAFMC	Tilefish - Mid-Atlantic Coast	2017	4	Full Update	Yes	
			2016	NA	Data Update		
NEFSC	NEFMC	Acadian redfish - Gulf of Maine / Georges Bank	2016	4	Full Update	Yes	
NEFSC	NEFMC	Atlantic cod - Georges Bank	2016	(-4)	Full Update	Yes	
		Substock: Eastern Georges Bank	2017	4	Full Update		
NEFSC	NEFMC	Atlantic cod - Gulf of Maine	2016	4	Full Update	Yes	
NEFSC	NEFMC	Atlantic halibut - Northwestern Atlantic Coast	2016	(-3)	Full Update	No	Assessment sunset in FY17
NEFSC	NEFMC	Atlantic herring - Northwestern Atlantic Coast	2015	5	Full Update	Yes	

National Marine Fisheries Service

Updated FY 2017 Quarter 4

Science Center(s) ¹	Jurisdiction ²	Stock	Last Assessment				Assessment Notes
			Fiscal Year	Level ³	Type	Adequate?	
NEFSC	NEFMC	Atlantic wolffish - Gulf of Maine / Georges Bank	2016	4	Full Update	Yes	
NEFSC	NEFMC	Barndoor skate - Georges Bank / Southern New England	2017	1	Full Update	No	
NEFSC	NEFMC	Clearnose skate - Southern New England / Mid-Atlantic	2017	1	Full Update	No	
NEFSC	NEFMC	Haddock - Georges Bank	2016	4	Full Update	Yes	
		Substock: Eastern Georges Bank	2017	4	Partial Update		
NEFSC	NEFMC	Haddock - Gulf of Maine	2016	4	Full Update	Yes	
NEFSC	NEFMC	Little skate - Georges Bank / Southern New England	2017	1	Full Update	No	
NEFSC	NEFMC	Ocean pout - Northwestern Atlantic Coast	2016	1	Full Update	No	
NEFSC	NEFMC	Offshore hake - Northwestern Atlantic Coast	2011	-1	Benchmark	No	
NEFSC	NEFMC	Pollock - Gulf of Maine / Georges Bank	2016	4	Full Update	Yes	
NEFSC	NEFMC	Red deepsea crab - Northwestern Atlantic	2006	1	Benchmark	No	
NEFSC	NEFMC	Red hake - Gulf of Maine / Northern Georges Bank	2015	1	Full Update	No	
NEFSC	NEFMC	Red hake - Southern Georges Bank / Mid-Atlantic	2015	1	Full Update	No	
NEFSC	NEFMC	Rosette skate - Southern New England / Mid-Atlantic	2017	1	Full Update	No	
NEFSC	NEFMC	Sea scallop - Northwestern Atlantic Coast	2017	4	Partial Update	Yes	
NEFSC	NEFMC	Silver hake - Gulf of Maine / Northern Georges Bank	2014	1	Full Update	No	
NEFSC	NEFMC	Silver hake - Southern Georges Bank / Mid-Atlantic	2014	1	Full Update	No	
NEFSC	NEFMC	Smooth skate - Gulf of Maine	2017	1	Full Update	No	
NEFSC	NEFMC	Thorny skate - Gulf of Maine	2017	1	Full Update	No	

National Marine Fisheries Service

Updated FY 2017 Quarter 4

Science Center(s) ¹	Jurisdiction ²	Stock	Last Assessment				Assessment Notes
			Fiscal Year	Level ³	Type	Adequate?	
NEFSC	NEFMC	White hake - Gulf of Maine / Georges Bank	2016	4	Full Update	Yes	
NEFSC	NEFMC	Windowpane - Gulf of Maine / Georges Bank	2016	1	Full Update	No	
NEFSC	NEFMC	Windowpane - Southern New England / Mid-Atlantic	2016	1	Full Update	No	
NEFSC	NEFMC	Winter flounder - Georges Bank	2016	4	Full Update	Yes	
NEFSC	NEFMC	Winter flounder - Gulf of Maine	2016	1	Full Update	No	
NEFSC	NEFMC	Winter flounder - Southern New England / Mid-Atlantic	2016	4	Full Update	Yes	
NEFSC	NEFMC	Winter skate - Georges Bank / Southern New England	2017	1	Full Update	No	
NEFSC	NEFMC	Witch flounder - Northwestern Atlantic Coast	2017	1	Benchmark	No	
NEFSC	NEFMC	Yellowtail flounder - Cape Cod / Gulf of Maine	2016	4	Full Update	Yes	
NEFSC	NEFMC	Yellowtail flounder - Georges Bank	2017	1	Full Update	No	
NEFSC	NEFMC	Yellowtail flounder - Southern New England / Mid-Atlantic	2016	4	Benchmark	Yes	
NEFSC	NEFMC/MAFMC	Goosefish - Gulf of Maine / Northern Georges Bank	2014	4	Full Update	Yes	
			2016	NA	Data Update		
NEFSC	NEFMC/MAFMC	Goosefish - Southern Georges Bank / Mid-Atlantic	2014	4	Full Update	Yes	
			2016	NA	Data Update		
NEFSC	NEFMC/MAFMC	Spiny dogfish - Atlantic Coast	2015	4	Full Update	Yes	
			2017	NA	Data Update		
NWFSC/SWFSC	PPMC	Arrowtooth flounder - Pacific Coast	2017	4	Full Update	Yes	
NWFSC/SWFSC	PPMC	Black rockfish - Northern Pacific Coast	2016	4	Benchmark	Yes	
NWFSC/SWFSC	PPMC	Black rockfish - Southern Pacific Coast	2016	4	Benchmark	Yes	
NWFSC/SWFSC	PPMC	Blackgill rockfish - Southern California	2017	4	Full Update	Yes	
NWFSC/SWFSC	PPMC	Blue rockfish - California	2017	4	Benchmark	Yes	

National Marine Fisheries Service

Updated FY 2017 Quarter 4

Science Center(s) ¹	Jurisdiction ²	Stock	Last Assessment				Assessment Notes
			Fiscal Year	Level ³	Type	Adequate?	
NWFSC/SWFSC	PPMC	Bocaccio - Southern Pacific Coast	2017	4	Full Update	Yes	
NWFSC/SWFSC	PPMC	Brown rockfish - Pacific Coast	2014	3	New	Yes	
NWFSC/SWFSC	PPMC	Cabazon - California	2009	4	Benchmark	No	
NWFSC/SWFSC	PPMC	California scorpionfish - Southern California	2017	4	Benchmark	Yes	
NWFSC/SWFSC	PPMC	Canary rockfish - Pacific Coast	2017	4	Partial Update	Yes	
NWFSC/SWFSC	PPMC	Chilipepper - Southern Pacific Coast	2017	4	Partial Update	Yes	
NWFSC/SWFSC	PPMC	Chinook salmon - Sacramento River Fall	2017	4	Full Update	Yes	
NWFSC/SWFSC	PPMC	Chinook salmon - Klamath River Fall	2017	3	Full Update	Yes	
NWFSC/SWFSC	PPMC	Cowcod - Southern California	2013	3	Benchmark	Yes	
NWFSC/SWFSC	PPMC	Darkblotched rockfish - Pacific Coast	2017	4	Full Update	Yes	
NWFSC/SWFSC	PPMC	Dover sole - Pacific Coast	2011	4	Benchmark	No	
NWFSC/SWFSC	PPMC	English sole - Pacific Coast	2013	3	Benchmark	Yes	
NWFSC/SWFSC	PPMC	Gopher rockfish - Northern California	2006	4	Full Update	No	
NWFSC/SWFSC	PPMC	Greenspotted rockfish - Pacific Coast	2011	3	New	No	
NWFSC/SWFSC	PPMC	Greenstriped rockfish - Pacific Coast	2009	4	New	No	
NWFSC/SWFSC	PPMC	Kelp greenling - Oregon	2015	4	Benchmark	Yes	
NWFSC/SWFSC	PPMC	Lingcod - Pacific Coast	2017	4	Benchmark	Yes	
NWFSC/SWFSC	PPMC	Longnose skate - Pacific Coast	2007	4	Full Update	No	
NWFSC/SWFSC	PPMC	Longspine thornyhead - Pacific Coast	2013	3	Benchmark	Yes	
NWFSC/SWFSC	PPMC	Pacific ocean perch - Pacific Coast	2011	4	Benchmark	No	
NWFSC/SWFSC	PPMC	Pacific sanddab - Pacific Coast	2013	4	New	Yes	Partial acceptance -- status determinations only
NWFSC/SWFSC	PPMC	Petrale sole - Pacific Coast	2015	4	Full Update	Yes	
NWFSC/SWFSC	PPMC	Rex sole - Pacific Coast	2013	3	Full Update	Yes	
NWFSC/SWFSC	PPMC	Rougheye rockfish - Pacific Coast	2013	4	Full Update	Yes	
NWFSC/SWFSC	PPMC	Sablefish - Pacific Coast	2015	4	Full Update	Yes	

National Marine Fisheries Service

Updated FY 2017 Quarter 4

Science Center(s) ¹	Jurisdiction ²	Stock	Last Assessment				Assessment Notes
			Fiscal Year	Level ³	Type	Adequate?	
NWFSC/SWFSC	PFMC	Shortbelly rockfish - Pacific Coast	2007	4	New	No	
NWFSC/SWFSC	PFMC	Shortspine thornyhead - Pacific Coast	2013	4	Benchmark	Yes	
NWFSC/SWFSC	PFMC	Spiny dogfish - Pacific Coast	2011	4	New	No	
NWFSC/SWFSC	PFMC	Splitnose rockfish - Pacific Coast	2009	4	New	No	
NWFSC/SWFSC	PFMC	Starry flounder - Pacific Coast	2005	4	New	No	
NWFSC/SWFSC	PFMC	Vermilion rockfish - California	2005	4	New	No	
NWFSC/SWFSC	PFMC	Widow rockfish - Pacific Coast	2015	4	Benchmark	Yes	
NWFSC/SWFSC	PFMC	Yelloweye rockfish - Pacific Coast	2017	4	Benchmark	Yes	
NWFSC/SWFSC	PFMC	Yellowtail rockfish - Northern Pacific Coast	2017	4	Benchmark	Yes	
PIFSC	WPFMC	American Samoa Bottomfish Multi-species Complex	2015	3	Full Update	Yes	
PIFSC	WPFMC	Guam Bottomfish Multi-species Complex	2015	3	Full Update	Yes	
PIFSC	WPFMC	Main Hawaiian Islands Deep Bottomfish Multi-species Complex	2015	3	Full Update	Yes	
PIFSC	WPFMC	Northern Mariana Islands Bottomfish Multi-species Complex	2015	3	Full Update	Yes	
SEFSC	CFMC	Caribbean Groupers	2015	2	Benchmark	No	Assessment of complex component red hind
SEFSC	CFMC	Caribbean Parrotfish Complex	NA				No
SEFSC	CFMC	Caribbean Snappers	2012	2	New	No	Assessment of silk snapper delayed
SEFSC	CFMC	Caribbean spiny lobster - Puerto Rico	2009	2	New	No	
SEFSC	CFMC	Caribbean spiny lobster - St. Croix	2009	2	New	No	
SEFSC	CFMC	Caribbean spiny lobster - St. Thomas/St. John	2009	2	New	No	
SEFSC	CFMC	Queen conch - Caribbean	2009	2	New	No	
SEFSC	CFMC	Triggerfish and Filefish Complex - Puerto Rico	2013	-1	Benchmark	No	
SEFSC	CFMC	Triggerfish and Filefish Complex - St. Croix	2013	-1	Benchmark	No	

National Marine Fisheries Service

Updated FY 2017 Quarter 4

Science Center(s) ¹	Jurisdiction ²	Stock	Last Assessment				Assessment Notes
			Fiscal Year	Level ³	Type	Adequate?	
SEFSC	CFMC	Triggerfish and Filefish Complex - St. Thomas/St. John	2013	-1	Benchmark	No	
SEFSC	GMFMC	Brown shrimp - Gulf of Mexico	2017	4	Full Update	Yes	
SEFSC	GMFMC	Gag - Gulf of Mexico	2014	4	Benchmark	Yes	Assessment planned for FY17 delayed
SEFSC	GMFMC	Gray triggerfish - Gulf of Mexico	2015	4	Full Update	Yes	
SEFSC	GMFMC	Greater amberjack - Gulf of Mexico	2017	4	Benchmark	Yes	
SEFSC	GMFMC	Hogfish - Eastern Gulf of Mexico	2015	4	Benchmark	Yes	
SEFSC	GMFMC	Pink shrimp - Gulf of Mexico	2017	4	Full Update	Yes	
SEFSC	GMFMC	Red grouper - Gulf of Mexico	2016	4	Benchmark	Yes	
SEFSC	GMFMC	Red snapper - Gulf of Mexico	2015	4	Full Update	Yes	
SEFSC	GMFMC	Royal red shrimp - Gulf of Mexico	2017	1	Full Update	No	
SEFSC	GMFMC	Tilefish - Gulf of Mexico	2011	4	Benchmark	No	
SEFSC	GMFMC	Vermilion snapper - Gulf of Mexico	2016	4	Full Update	Yes	
SEFSC	GMFMC	White shrimp - Gulf of Mexico	2017	4	Full Update	Yes	
SEFSC	GMFMC	Yellowedge grouper - Gulf of Mexico	2011	4	Benchmark	No	
SEFSC	HMS	Atlantic sharpnose shark - Atlantic	2014	4	Full Update	Yes	Partial acceptance -- status determinations only
SEFSC	HMS	Atlantic sharpnose shark - Gulf of Mexico	2014	4	Full Update	Yes	Partial acceptance -- status determinations only
SEFSC	HMS	Blacknose shark - Atlantic	2011	4	Full Update	No	
SEFSC	HMS	Blacknose shark - Gulf of Mexico	2011	-4	Full Update	No	
SEFSC	HMS	Blacktip shark - Atlantic	2006	-4	Full Update	No	
SEFSC	HMS	Blacktip shark - Gulf of Mexico	2012	4	Full Update	No	Assessment sunset in FY17
SEFSC	HMS	Blue shark - North Atlantic	2016	4	Benchmark	Yes	
SEFSC	HMS	Bonnethead - Atlantic	2013	-4	Full Update	No	Rejected -- results too uncertain to be considered adequate
SEFSC	HMS	Bonnethead - Gulf of Mexico	2013	-4	Full Update	No	Rejected -- results too uncertain to be considered adequate
SEFSC	HMS	Dusky shark - Atlantic	2016	4	Full Update	Yes	
SEFSC	HMS	Finetooth shark - Atlantic	2008	3	Benchmark	No	
SEFSC	HMS	Porbeagle - Atlantic	2010	4	New	No	

National Marine Fisheries Service
Updated FY 2017 Quarter 4

Science Center(s) ¹	Jurisdiction ²	Stock	Last Assessment				Assessment Notes
			Fiscal Year	Level ³	Type	Adequate?	
SEFSC	HMS	Sandbar shark - Atlantic	2011	4	Full Update	No	
SEFSC	HMS	Scalloped Hammerhead Complex - Atlantic	2010	3	Unknown	No	
SEFSC	HMS	Shortfin mako - Atlantic	2013	4	Benchmark	Yes	
SEFSC	SAFMC	Black grouper - Southern Atlantic Coast	2010	4	Benchmark	No	
SEFSC	SAFMC	Black sea bass - Southern Atlantic Coast	2013	4	Full Update	Yes	Assessment delayed to FY18
SEFSC	SAFMC	Blueline tilefish - Southern Atlantic Coast	2014	4	Benchmark	Yes	
SEFSC	SAFMC	Brown rock shrimp - Southern Atlantic Coast	2017	1	Full Update	No	
SEFSC	SAFMC	Brown shrimp - Southern Atlantic Coast	2017	1	Full Update	No	
SEFSC	SAFMC	Dolphinfish - Southern Atlantic Coast	2000	2	Unknown	No	
SEFSC	SAFMC	Gag - Southern Atlantic Coast	2014	4	Full Update	Yes	
SEFSC	SAFMC	Gray triggerfish - Southern Atlantic Coast	2016	-4	Benchmark	No	2016 Benchmark was rejected due to poor model fit. 2001 Was last accepted assessment
SEFSC	SAFMC	Greater amberjack - Southern Atlantic Coast	2008	4	Benchmark	No	
SEFSC	SAFMC	Hogfish - Southeast Florida	2015	4	Benchmark	Yes	
SEFSC	SAFMC	Pink shrimp - Southern Atlantic Coast	2017	1	Full Update	No	
SEFSC	SAFMC	Red grouper - Southern Atlantic Coast	2017	4	Standard	Yes	
SEFSC	SAFMC	Red porgy - Southern Atlantic Coast	2013	4	Full Update	Yes	
SEFSC	SAFMC	Red snapper - Southern Atlantic Coast	2016	4	Benchmark	Yes	
SEFSC	SAFMC	Snowy grouper - Southern Atlantic Coast	2014	4	Unknown	Yes	
SEFSC	SAFMC	Speckled hind - Southern Atlantic Coast	2002	2	Unknown	No	
SEFSC	SAFMC	Tilefish - Southern Atlantic Coast	2016	4	Full Update	Yes	

National Marine Fisheries Service

Updated FY 2017 Quarter 4

Science Center(s) ¹	Jurisdiction ²	Stock	Last Assessment				Assessment Notes
			Fiscal Year	Level ³	Type	Adequate?	
SEFSC	SAFMC	Vermilion snapper - Southern Atlantic Coast	2013	4	Full Update	Yes	
SEFSC	SAFMC	Warsaw grouper - Southern Atlantic Coast	2002	2	Unknown	No	
SEFSC	SAFMC	White shrimp - Southern Atlantic Coast	2017	1	Full Update	No	
SEFSC	SAFMC/ GMFMC	Caribbean spiny lobster - Southern Atlantic Coast / Gulf of Mexico	2011	(-4)	Full Update	No	Rejected -- results too uncertain to be considered adequate
SEFSC	SAFMC/ GMFMC	Cobia - Gulf of Mexico	2013	4	Benchmark	Yes	
SEFSC	SAFMC/ GMFMC	Cobia - Southern Atlantic Coast	2013	4	Benchmark	Yes	
SEFSC	SAFMC/ GMFMC	King mackerel - Gulf of Mexico	2014	4	Benchmark	Yes	
SEFSC	SAFMC/ GMFMC	King mackerel - Southern Atlantic Coast	2014	4	Benchmark	Yes	
SEFSC	SAFMC/ GMFMC	Mutton snapper - Southern Atlantic Coast / Gulf of Mexico	2015	4	Full Update	Yes	
SEFSC	SAFMC/ GMFMC	Spanish mackerel - Gulf of Mexico	2013	4	Benchmark	Yes	
SEFSC	SAFMC/ GMFMC	Spanish mackerel - Southern Atlantic Coast	2013	4	Benchmark	Yes	
SEFSC	SAFMC/ GMFMC	Yellowtail snapper - Southern Atlantic Coast / Gulf of Mexico	2013	4	Benchmark	Yes	
SWFSC	PFMC	Northern anchovy - Southern Pacific Coast	1995	0	Unknown	No	
SWFSC	PFMC	Opalescent inshore squid - Pacific Coast	2007	2	New	No	
SWFSC	PFMC	Pacific chub mackerel - Pacific Coast	2017	4	Full Update	Yes	
SWFSC	PFMC	Pacific sardine - Pacific Coast	2017	5	Benchmark	Yes	

Footnotes

¹ NOAA Fisheries Science Centers include Alaska Fisheries Science Center (AFSC), Northeast Fisheries Science Center (NEFSC), Northwest Fisheries Science Center (NWFS), Pacific Islands Fisheries Science Center (PIFSC), Southeast Fisheries Science Center (SEFSC) and Southwest Fisheries Science Center (SWFSC). In some cases, assessments are conducted by multiple science centers (e.g. NW/SW and SW/PI).

² Jurisdictions include Caribbean Fishery Management Council (CFMC), Gulf of Mexico Fishery Management Council (GMFMC), Atlantic Highly Migratory Species Division (HMS), Mid-Atlantic Fishery Management Council (MAFMC), New England Fishery Management Council (NEFMC), North Pacific Fishery Management Council (NPFMC), Pacific Fishery Management Council (PFMC), South Atlantic Fishery Management Council (SAFMC) and Western Pacific Fishery Management Council (WPFMC).

³ Level of complexity of assessment methods used for the particular stock. Generally reflects the availability of data and the value or importance of the fishery. Levels are described in the Stock Assessment Improvement Plan <http://www.st.nmfs.noaa.gov/StockAssessment/index.html>). A negative level indicates that an assessment was attempted at that level of complexity, but the effort was not accepted in its technical review.

* Changes are indicated by red, bold font.



Office of Science and Technology
NOAA Fisheries
1315 East West Highway
Silver Spring, Maryland 20910

Phone: (301) 427-8100
Fax: (301) 713-1875
E-mail: Jeffrey.Vieser@noaa.gov