

Give whales BUBBLE room

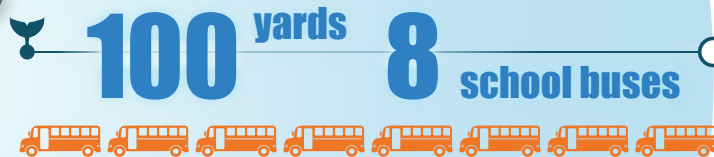
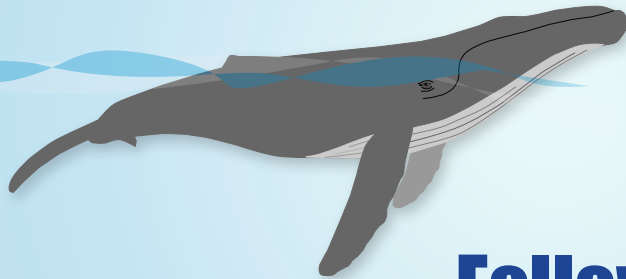
In Alaska,

Federal humpback whale approach regulations under the Marine Mammal Protection Act require that you:

- ✗ Not approach within 100 yards of a humpback whale
- ✗ Not place your vessel in the path of oncoming humpback whales causing them to surface within 100 yards of your vessel
- ✗ Not disrupt the normal behavior or prior activity of a humpback whale
- ✓ Operate your vessel at a slow, safe speed when near a humpback whale

*Please
don't burst my
bubble!*

*I give whales
personal "bubble"
space for their safety
and mine*



Follow these tips:



Don't let your vessel's presence bubble over

Limit your viewing time to 30 minutes



A whale could pop up at any time!

Use a wide berth in areas that you see whale watching vessels idling or traveling slowly



Don't be in your own bubble

Use VHF radio to coordinate with other boaters to reduce crowding and to avoid ship strike



Reduce your spray

Go slow when approaching and departing whales



Expand your bubble

Give more space when watching groups or mother-calf pairs

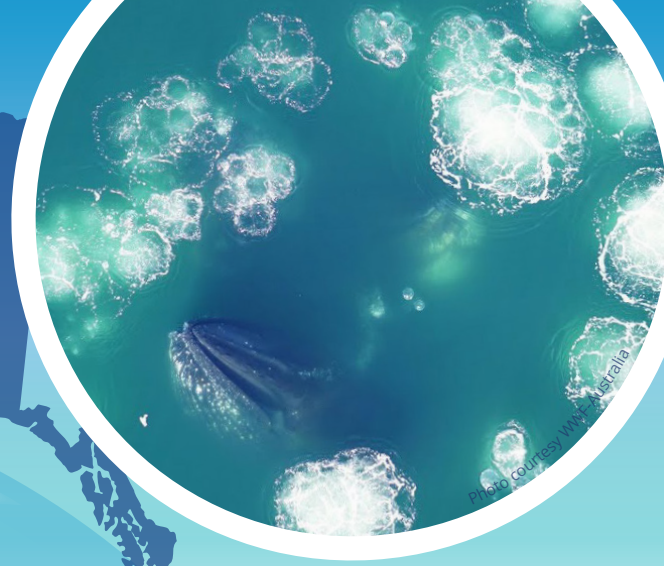


Choose Whale SENSE operators when booking whale watching tours



**Report violations in Alaska to
NOAA Enforcement at 1-800-853-1964**

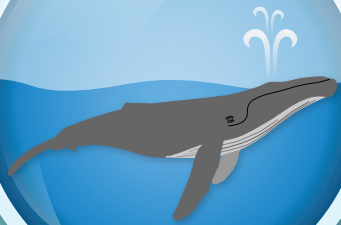
**NOAA
FISHERIES**
Alaska Region



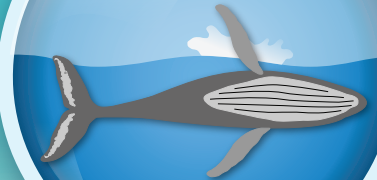
Keep a lookout for “pop”-ular surface behaviors



Blow



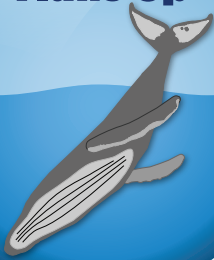
Pec Slap



Lunge Feeding



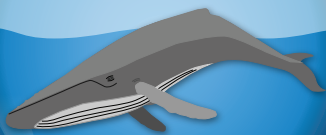
Fluke Up



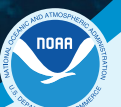
Breach



Peduncle Arch



Peduncle Throw



NOAA
FISHERIES
Alaska Region